

DO NOT SCALE FROM THIS PRINT

TABLE 2							
No. OF POS	"C"	"D"	"E"	"F"	"G"	QSE-XXX-01-H-D-DP-A OR QSE-014-01-H-D-DP-RT1 (FOR -RT1 OPTION)	QTE-XXX-01-H-D-DP-A OR QTE-014-01-H-D-DP-RT1 (FOR -RT1 OPTION)
-014	.768 +/- .010 [19.50 +/- 0.25]	1.0875[27.623]	1.3375[33.973]	1.1285[28.663]	1.1285[28.663]	QSE-014-01-H-D-DP-A OR QSE-014-01-H-D-DP-RT1 (FOR -RT1 OPTION)	QTE-014-01-H-D-DP-A OR QTE-014-01-H-D-DP-RT1 (FOR -RT1 OPTION)
-028	1.556 +/- .010 [39.52 +/- 0.25]	1.8755[47.638]	2.1255[53.988]	1.916[40.872]	1.916[40.872]	QSE-028-01-H-D-DP-A OR QSE-028-01-H-D-DP-RT1 (FOR -RT1 OPTION)	QTE-028-01-H-D-DP-A OR QTE-028-01-H-D-DP-RT1 (FOR -RT1 OPTION)
-042	2.344 +/- .010 [59.54 +/- 0.25]	2.6635[67.653]	2.9135[74.003]	2.7035[60.875]	2.7035[60.875]	QSE-042-01-H-D-DP-A OR QSE-042-01-H-D-DP-RT1 (FOR -RT1 OPTION)	QTE-042-01-H-D-DP-A OR QTE-042-01-H-D-DP-RT1 (FOR -RT1 OPTION)

HFEM2-XXX-T-XX.XX-DP-XXX

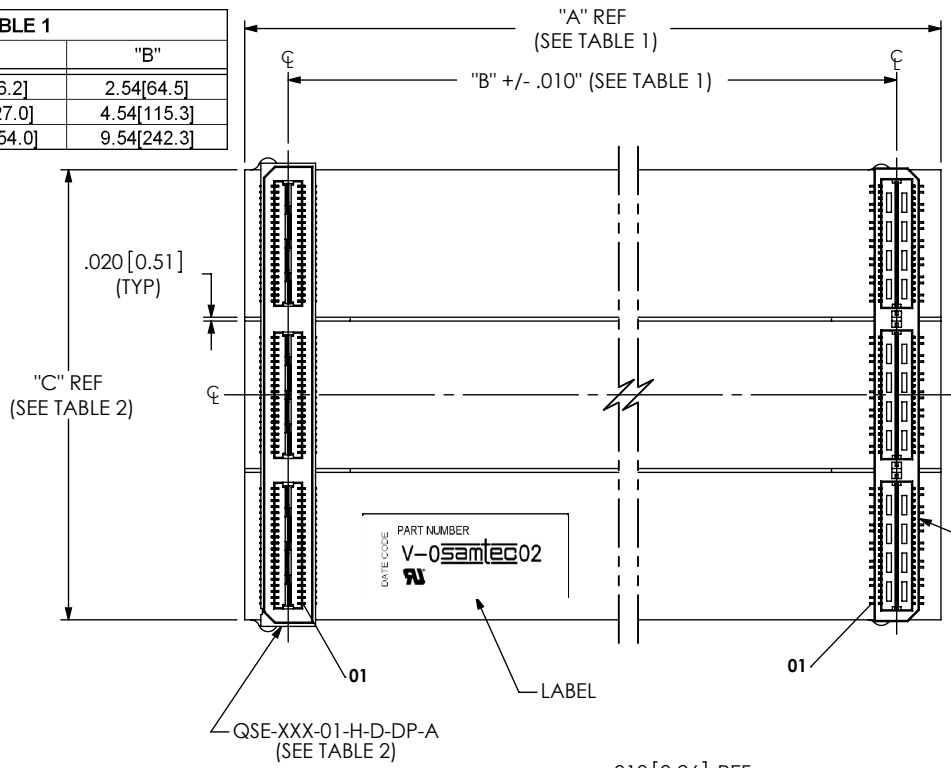
No OF POSITIONS
-014, -028, -042 (PER ROW)

TRANSFER END
(MALE-FEMALE)

OPTION
-MH: MOUNTING HOLES (SEE FIG. 2, SHEET 2)
-RT1: RETENTION FEATURE (SEE FIG 3, SHEET 3) (LEAVE BLANK FOR STANDARD)
-DP: DIFFERENTIAL PAIRS

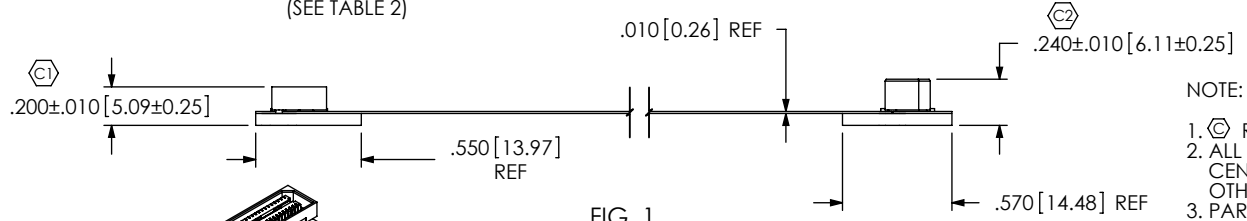
LENGTH
-03.00: 3.00[76.2] INCHES
-05.00: 5.00[127.0] INCHES
-10.00: 10.00[254.0] INCHES

TABLE 1		
LENGTH	"A"	"B"
-3.00	3.00[76.2]	2.54[64.5]
-5.00	5.00[127.0]	4.54[115.3]
-10.00	10.00[254.0]	9.54[242.3]

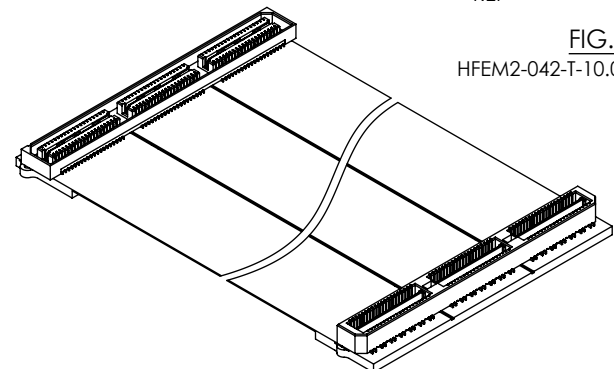


THIS PRODUCT MANUFACTURED WITH LEAD-FREE PROCESSING

TABLE 3 (FOR FLEX MANUFACTURING REFERENCE)	
HFEM2-014-T-03.00-DP	10186
HFEM2-014-T-03.00-DP-MH	10187
HFEM2-014-T-03.00-DP-RT1	10417
HFEM2-028-T-03.00-DP	10188
HFEM2-028-T-03.00-DP-MH	10189
HFEM2-028-T-03.00-DP-RT1	10418
HFEM2-042-T-03.00-DP	10190
HFEM2-042-T-03.00-DP-MH	10191
HFEM2-042-T-03.00-DP-RT1	10419
HFEM2-014-T-05.00-DP	10192
HFEM2-014-T-05.00-DP-MH	10193
HFEM2-014-T-05.00-DP-RT1	10420
HFEM2-028-T-05.00-DP	10194
HFEM2-028-T-05.00-DP-MH	10195
HFEM2-028-T-05.00-DP-RT1	10421
HFEM2-042-T-05.00-DP	10196
HFEM2-042-T-05.00-DP-MH	10197
HFEM2-042-T-05.00-DP-RT1	10422
HFEM2-014-T-10.00-DP	10198
HFEM2-014-T-10.00-DP-MH	10199
HFEM2-014-T-10.00-DP-RT1	10423
HFEM2-028-T-10.00-DP	10200
HFEM2-028-T-10.00-DP-MH	10201
HFEM2-028-T-10.00-DP-RT1	10424
HFEM2-042-T-10.00-DP	10202
HFEM2-042-T-10.00-DP-MH	10203
HFEM2-042-T-10.00-DP-RT1	10425



- NOTE:
- ⊕ REPRESENTS A CRITICAL DIMENSION.
 - ALL DIMENSIONS TO BE SYMMETRICAL ABOUT CENTERLINE WITHIN ±.002[.05] UNLESS OTHERWISE STATED.
 - PARTS TO BE IN LAYER FOAM PACKAGE.
 - ALL SIGNALS ROUTED PIN TO PIN, (E.G. 1 TO 1, 2 TO 2, ETC.)
 - PARTS TO BE RoHS COMPLIANT



UNLESS OTHERWISE SPECIFIED, DIMENSIONS ARE IN INCHES.
TOLERANCES ARE:
DECIMALS ANGLES
.XX: ±.01 [.3]
.XXX: ±.005 [.13]
.XXXX: ±.0020 [.051]

PROPRIETARY NOTE
THIS DOCUMENT CONTAINS INFORMATION CONFIDENTIAL AND PROPRIETARY TO SAMTEC, INC. AND SHALL NOT BE REPRODUCED OR TRANSFERRED TO OTHER DOCUMENTS OR DISCLOSED TO OTHERS OR USED FOR ANY PURPOSE OTHER THAN THAT WHICH IT WAS OBTAINED WITHOUT THE EXPRESSED WRITTEN CONSENT OF SAMTEC, INC.

samtec
520 PARK EAST BLVD, NEW ALBANY, IN 47150
PHONE: 812-944-6733 FAX: 812-948-5047
e-Mail: info@SAMTEC.com code 55322

DESCRIPTION:
HIGH SPEED FLEX 0.8mm ASSEMBLY

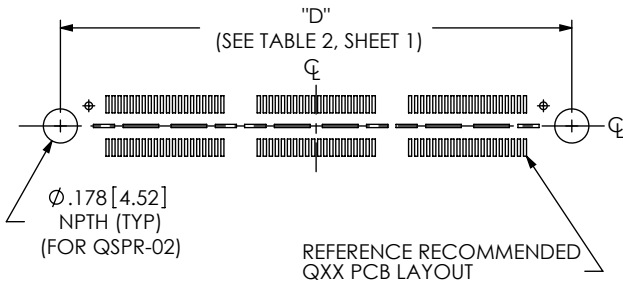
DWG. NO.
HFEM2-XXX-T-XX.XX-DP-XXX

BY: CLAY W 5/19/2004 SHEET 1 OF 4

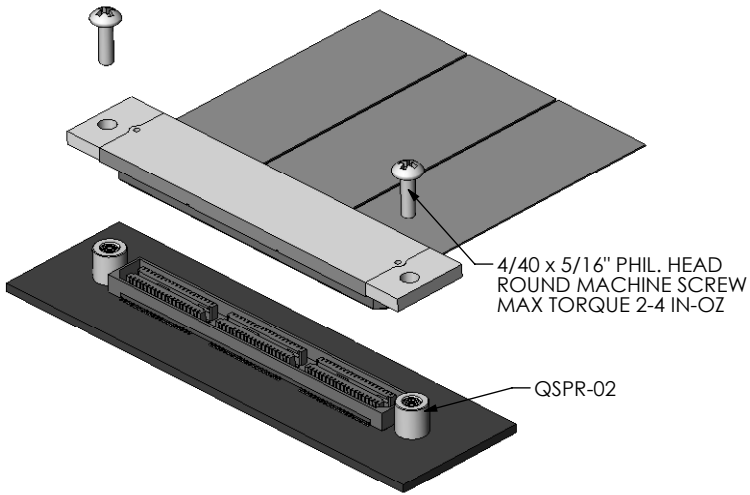
CONNECTOR MATERIALS:
INSULATORS: LCP
CONTACTS, TERMINALS, & GROUND PLANES:
PHOS BRONZE
FLEX MATERIALS:
SEE CROSS SECTION DETAIL

DO NOT SCALE DRAWING SHEET SCALE: 1:1

RECOMMENDED LAYOUT FOR -MH SCREW DOWN OPTIONS



SCREW DOWN APPLICATION VIEW

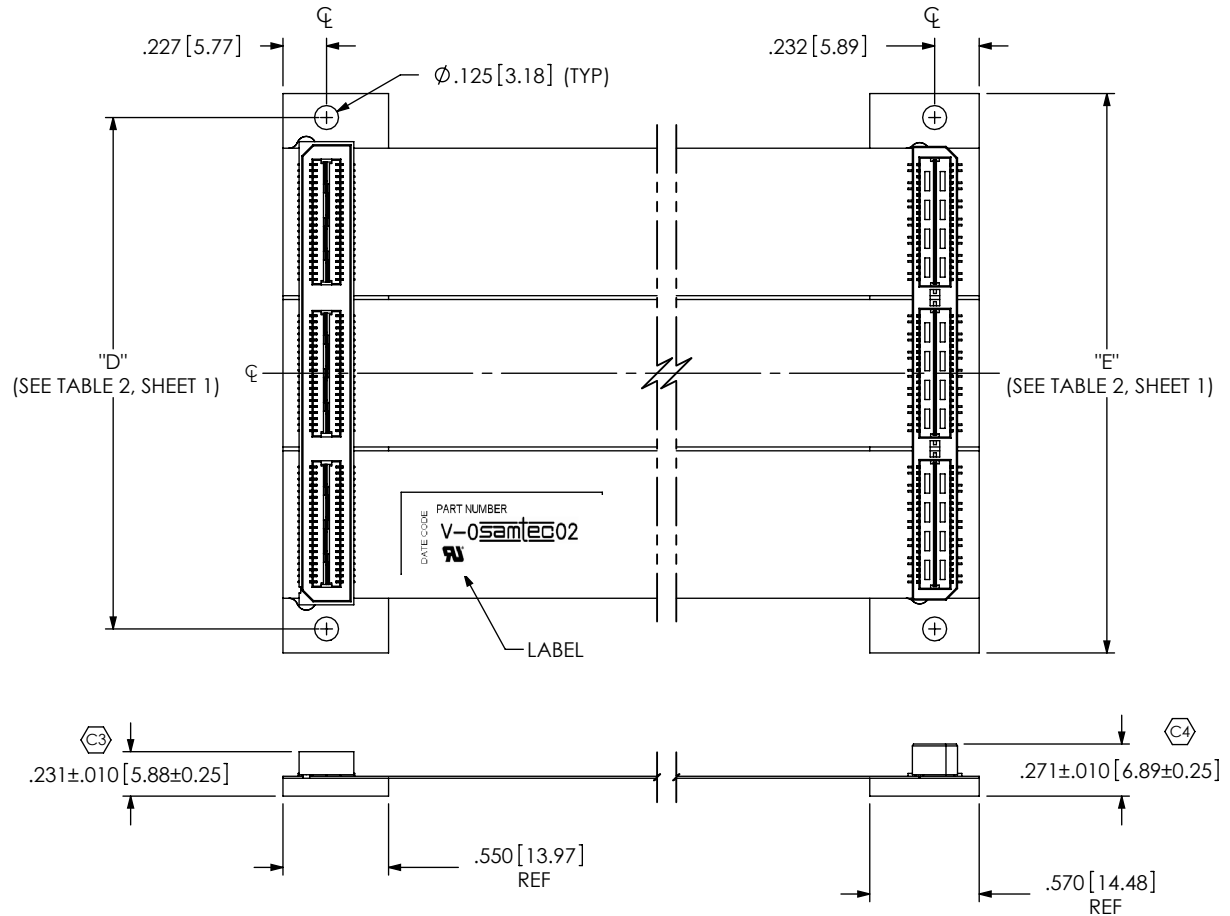


COVERFILM	<input type="text"/>	.002[0.05] POLYIMIDE .001[0.03] ADHESIVE
COPPER CLAD	<input type="text"/>	1/2 oz COPPER .001[0.03] ADHESIVE .001[0.03] POLYIMIDE .001[0.03] ADHESIVE 1/2 oz COPPER
COVERFILM	<input type="text"/>	.001[0.03] ADHESIVE .002[0.05] POLYIMIDE
ADHESIVE	<input type="text"/>	.001[0.03] ADHESIVE
STIFFENER	<input type="text"/>	STANDARD: .062[1.57] FR4 -MH OPTION: .093[2.36] FR4 -RT1 OPTION: .093[2.36] FR4

CROSS SECTION OF
FLEX & STIFFENER

NOT TO SCALE

FIG. 2
-MH OPTION
(SAME AS FIG. 1, UNLESS OTHERWISE STATED)
HFEM2-042-T-10.00-DP-MH SHOWN



PROPRIETARY NOTE
THIS DOCUMENT CONTAINS INFORMATION
CONFIDENTIAL AND PROPRIETARY TO
SAMTEC, INC. AND SHALL NOT BE REPRODUCED
OR TRANSFERRED TO OTHER DOCUMENTS OR
DISCLOSED TO OTHERS OR USED FOR ANY
PURPOSE OTHER THAN THAT WHICH IT WAS
OBTAINED WITHOUT THE EXPRESSED WRITTEN
CONSENT OF SAMTEC, INC.

DO NOT SCALE DRAWING

SHEET SCALE: 1:1



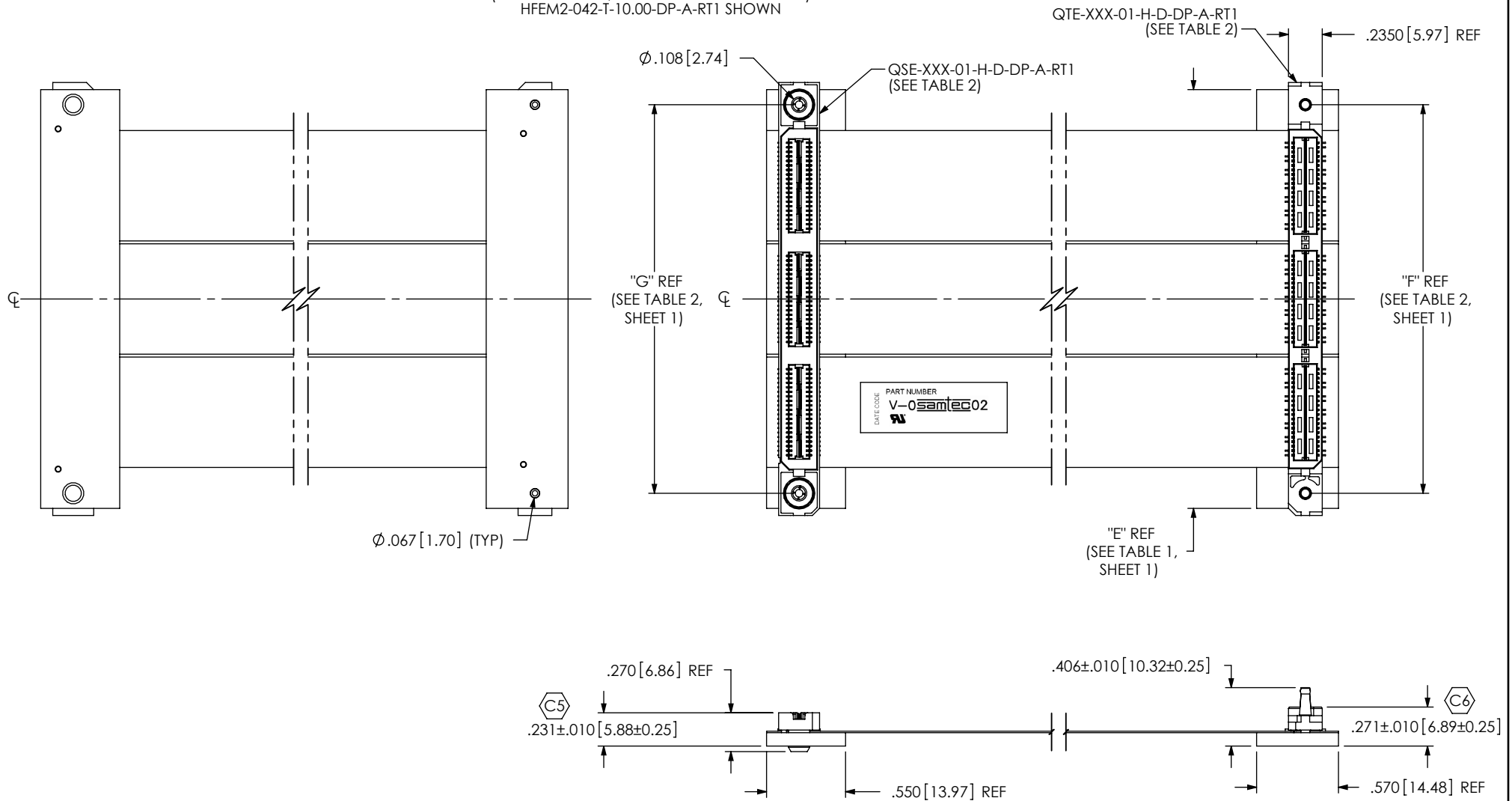
520 PARK EAST BLVD, NEW ALBANY, IN 47150
PHONE: 812-944-6733 FAX: 812-948-5047
e-Mail: info@SAMTEC.com code 55322

DESCRIPTION:
HIGH SPEED FLEX 0.8mm ASSEMBLY

DWG. NO.
HFEM2-XXX-T-XX.XX-DP-XXX

BY: CLAY W 5/19/2004 SHEET 2 OF 4

FIG. 3
 -RT1 OPTION
 (SAME AS FIG. 1, UNLESS OTHERWISE STATED)
 HFEM2-042-T-10.00-DP-A-RT1 SHOWN



PROPRIETARY NOTE
 THIS DOCUMENT CONTAINS INFORMATION
 CONFIDENTIAL AND PROPRIETARY TO
 SAMTEC, INC. AND SHALL NOT BE REPRODUCED
 OR TRANSFERRED TO OTHER DOCUMENTS OR
 DISCLOSED TO OTHERS OR USED FOR ANY
 PURPOSE OTHER THAN THAT WHICH IT WAS
 OBTAINED WITHOUT THE EXPRESSED WRITTEN
 CONSENT OF SAMTEC, INC.

DO NOT SCALE DRAWING

SHEET SCALE: 1:1

samtec


520 PARK EAST BLVD, NEW ALBANY, IN 47150
 PHONE: 812-944-6733 FAX: 812-948-5047
 e-Mail: info@SAMTEC.com code 55322

DESCRIPTION: HIGH SPEED FLEX 0.8mm ASSEMBLY

DWG. NO. HFEM2-XXX-T-XX.XX-DP-XXX

BY: CLAY W 5/19/2004 SHEET 3 OF 4

HFEM2-DP			
-14 Shown. -28 and -42 repeat same pattern.			
J1 Pin	Signal	J2 Pin	DP Pair
1	S	1	Pair
3	S	3	
5	G	5	Pin Omitted
2	S	2	Pair
4	S	4	
6	G	6	Pin Omitted
7	S	7	Pair
9	S	9	
11	G	11	Pin Omitted
8	S	8	Pair
10	S	10	
12	G	12	Pin Omitted
13	S	13	Pair
15	S	15	
17	G	17	Pin Omitted
14	S	14	Pair
16	S	16	
18	G	18	Pin Omitted
19	S	19	Pair
21	S	21	
23	G	23	Pin Omitted
20	S	20	Pair
22	S	22	
24	G	24	Pin Omitted
25	S	25	Pair
27	S	27	
29	G	29	Pin Omitted
26	S	26	Pair
28	S	28	
30	G	30	Pin Omitted
31	S	31	Pair
33	S	33	
35	G	35	Pin Omitted
32	S	32	Pair
34	S	34	
36	G	36	Pin Omitted
37	S	37	Pair
39	S	39	
38	S	38	Pair
40	S	40	

<p>PROPRIETARY NOTE</p> <p>THIS DOCUMENT CONTAINS INFORMATION CONFIDENTIAL AND PROPRIETARY TO SAMTEC, INC. AND SHALL NOT BE REPRODUCED OR TRANSFERRED TO OTHER DOCUMENTS OR DISCLOSED TO OTHERS OR USED FOR ANY PURPOSE OTHER THAN THAT WHICH IT WAS OBTAINED WITHOUT THE EXPRESSED WRITTEN CONSENT OF SAMTEC, INC.</p> <p>DO NOT SCALE DRAWING</p> <p>SHEET SCALE: 1:1</p>		
	<p>520 PARK EAST BLVD, NEW ALBANY, IN 47150 PHONE: 812-944-6733 FAX: 812-948-5047 e-Mail info@SAMTEC.com code 55322</p>	
	<p>DESCRIPTION: HIGH SPEED FLEX 0.8mm ASSEMBLY</p>	
	<p>DWG. NO. HFEM2-XXX-T-XX.XX-DP-XXX</p>	
BY: CLAY W	5/19/2004	SHEET 4 OF 4