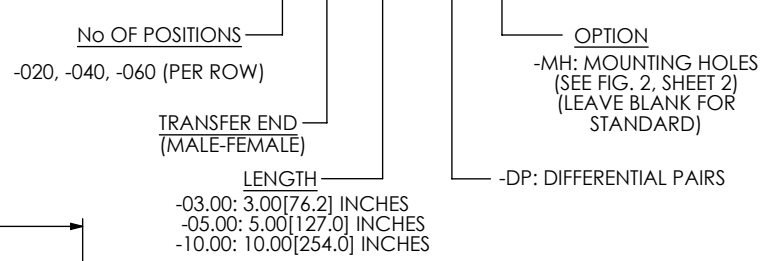


REVISION F

No. OF POS	"C"	"D"	"E"	QSH-XXX-01-L-D-DP-A	QTH-XXX-01-L-D-DP-A	FLEX
-020	.768 +/- .010 [19.50 +/- 0.25]	1.0875[27.623]	1.3375[33.973]	QSH-020-01-L-D-DP-A	QTH-020-01-L-D-DP-A	3", FE-10130 (QTY:1) 5", FE-10131 (QTY:1) 10", FE-10132 (QTY:1)
-040	1.556 +/- .010 [39.52 +/- 0.25]	1.875[47.638]	2.125[53.988]	QSH-040-01-L-D-DP-A	QTH-040-01-L-D-DP-A	3", FE-10130 (QTY:2) 5", FE-10131 (QTY:2) 10", FE-10132 (QTY:2)
-060	2.344 +/- .010 [59.54 +/- 0.25]	2.663[67.653]	2.913[74.003]	QSH-060-01-L-D-DP-A	QTH-060-01-L-D-DP-A	3", FE-10130 (QTY:3) 5", FE-10131 (QTY:3) 10", FE-10132 (QTY:3)

LENGTH	"A"	"B"
-3.00	3.00[76.2]	2.54[64.5]
-5.00	5.00[127.0]	4.54[115.3]
-10.00	10.00[254.0]	9.54[242.3]

HFHM-XXX-T-XX.XX-DP-XX



- NOTE:
1. $\text{\textcircled{C}}$ REPRESENTS A CRITICAL DIMENSION.
 2. ALL DIMENSIONS TO BE SYMMETRICAL ABOUT CENTERLINE WITHIN $\pm .002$ [.05] UNLESS OTHERWISE STATED.
 3. LAYER FOAM PACKAGED.
 4. ALL SIGNALS TO BE ROUTED PIN TO PIN, (E.G. 1 TO 1, 2 TO 2, ETC.)
 5. PARTS TO BE RoHS COMPLIANT

DO NOT SCALE FROM THIS PRINT

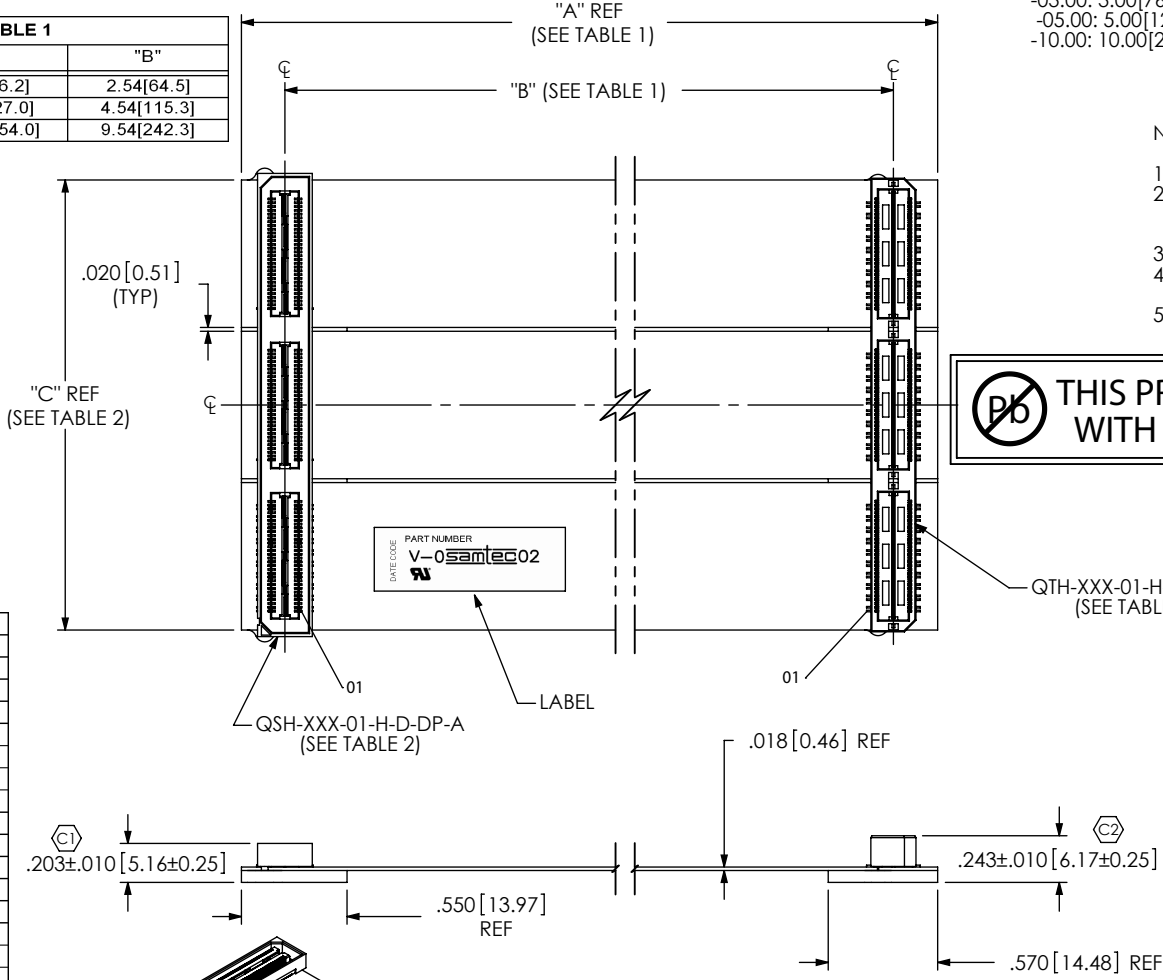


FIG. 1
HFHM-060-T-10.00-DP SHOWN

PART NUMBER	FE NUMBER
HFHM-020-T-03.00-DP	FE-10133
HFHM-020-T-03.00-DP-MH	FE-10134
HFHM-040-T-03.00-DP	FE-10135
HFHM-040-T-03.00-DP-MH	FE-10136
HFHM-060-T-03.00-DP	FE-10137
HFHM-060-T-03.00-DP-MH	FE-10138
HFHM-020-T-05.00-DP	FE-10139
HFHM-020-T-05.00-DP-MH	FE-10140
HFHM-040-T-05.00-DP	FE-10141
HFHM-040-T-05.00-DP-MH	FE-10142
HFHM-060-T-05.00-DP	FE-10143
HFHM-060-T-05.00-DP-MH	FE-10144
HFHM-020-T-10.00-DP	FE-10145
HFHM-020-T-10.00-DP-MH	FE-10146
HFHM-040-T-10.00-DP	FE-10147
HFHM-040-T-10.00-DP-MH	FE-10148
HFHM-060-T-10.00-DP	FE-10149
HFHM-060-T-10.00-DP-MH	FE-10150

F:\DWG\MISC\MKTG\HFHM-XXX-T-XX.XX-DP-XX-MKT.SLDDRW

UNLESS OTHERWISE SPECIFIED, DIMENSIONS ARE IN INCHES.
TOLERANCES ARE:
DECIMALS ANGLES
.XX: $\pm .01$ [.3]
.XXX: $\pm .005$ [.13]
.XXXX: $\pm .0020$ [.051]
2°

PROPRIETARY NOTE
THIS DOCUMENT CONTAINS INFORMATION CONFIDENTIAL AND PROPRIETARY TO SAMTEC, INC. AND SHALL NOT BE REPRODUCED OR TRANSFERRED TO OTHER DOCUMENTS OR DISCLOSED TO OTHERS OR USED FOR ANY PURPOSE OTHER THAN THAT WHICH IT WAS OBTAINED WITHOUT THE EXPRESSED WRITTEN CONSENT OF SAMTEC, INC.

1603 Watson Court Milpitas, CA 95035
Tel: (408) 635-3540 Fax: (408) 956-8278
sales@fit4flex.com

CONNECTOR MATERIALS:
INSULATORS: LCP
CONTACTS, TERMINALS, & GROUND PLANES:
PHOS BRONZE
FLEX MATERIALS:
SEE CROSS SECTION DETAIL

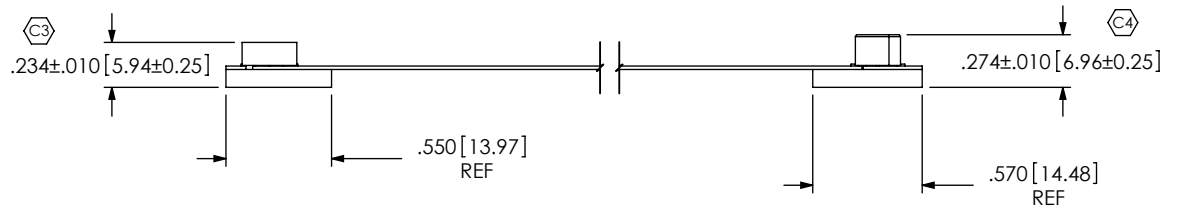
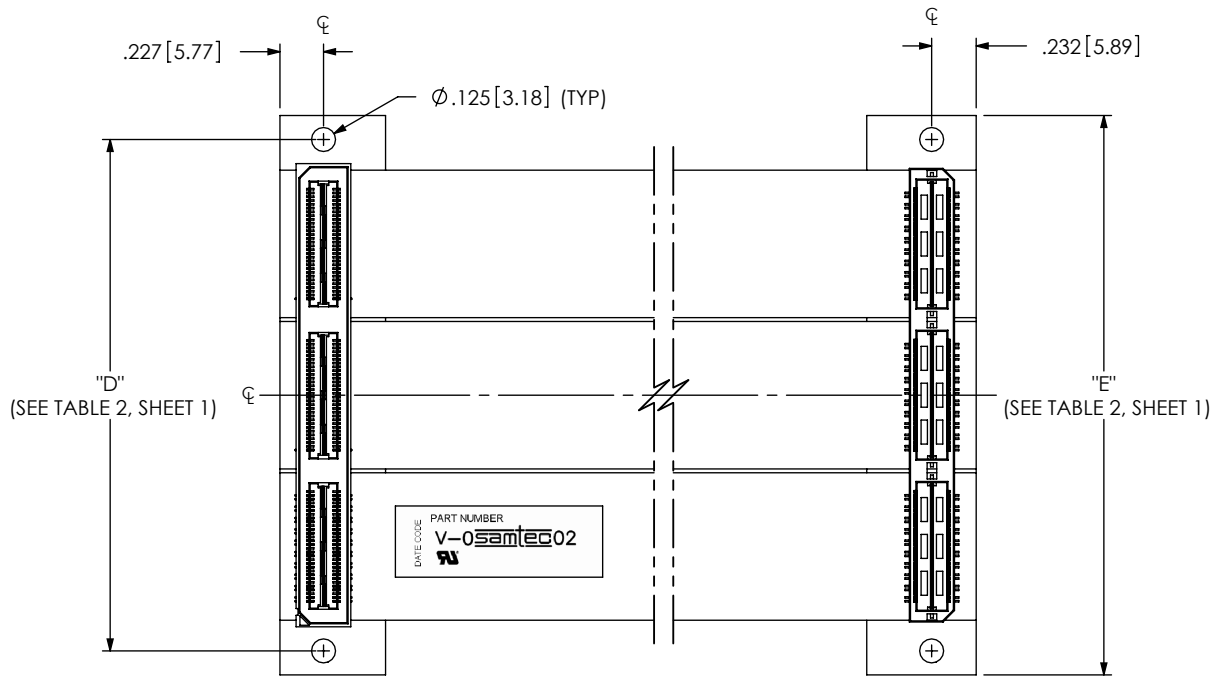
DO NOT SCALE DRAWING SHEET SCALE: 1:1

DESCRIPTION:
HIGH SPEED FLEX 0.5mm ASSEMBLY

DWG. NO.
HFHM-XXX-T-XX.XX-DP-XX

BY: J. CUMMINGS 12/20/2004 SHEET 1 OF 3

FIG. 2
-MH OPTION
(SAME AS FIG. 1, UNLESS OTHERWISE STATED)
HFHM-060-T-10.00-DP-MH SHOWN



COVERFILM		.001 [0.03] POLYIMIDE .001 [0.03] ADHESIVE
COPPER CLAD		1 oz COPPER .001 [0.03] ADHESIVE .003 [0.08] POLYIMIDE
ADHESIVE		.002 [0.05] ADHESIVE
COPPER		1 oz COPPER
ADHESIVE		.001 [0.03] ADHESIVE
COPPER CLAD		.003 [0.08] POLYIMIDE .001 [0.03] ADHESIVE 1 oz COPPER
COVERFILM		.001 [0.03] POLYIMIDE .001 [0.03] ADHESIVE
ADHESIVE		.001 [0.03] ADHESIVE
STIFFENER		STANDARD: .062 [1.57] FR4 -MH OPTION: .093 [2.36] FR4

CROSS SECTION OF
FLEX & STIFFENER
NOT TO SCALE

PROPRIETARY NOTE
THIS DOCUMENT CONTAINS INFORMATION
CONFIDENTIAL AND PROPRIETARY TO
SAMTEC, INC. AND SHALL NOT BE REPRODUCED
OR TRANSFERRED TO OTHER DOCUMENTS OR
DISCLOSED TO OTHERS OR USED FOR ANY
PURPOSE OTHER THAN THAT WHICH IT WAS
OBTAINED WITHOUT THE EXPRESSED WRITTEN
CONSENT OF SAMTEC, INC.

DO NOT SCALE DRAWING

SHEET SCALE: 1:1



1603 Watson Court Milpitas, CA 95035
Tel: (408) 635-3540 Fax: (408) 956-8278
sales@fit4flex.com

DESCRIPTION:
HIGH SPEED FLEX 0.5mm ASSEMBLY

DWG. NO.
HFHM-XXX-T-XX.XX-DP-XX


BY: J. CUMMINGS 12/20/2004 SHEET 2 OF 3

HFHM-DP

-20 Shown. -40 and -60 repeat same pattern.

J1 Pin	Signal	J2 Pin	DP Pair
1	S	1	Pair
3	S	3	
2	S	2	Pair
4	S	4	
5	S	5	Pair
7	S	7	
6	S	6	Pair
8	S	8	
9	S	9	Pair
11	S	11	
10	S	10	Pair
12	S	12	
13	S	13	Pair
15	S	15	
14	S	14	Pair
16	S	16	
17	S	17	Pair
19	S	19	
18	S	18	Pair
20	S	20	
21	S	21	Pair
23	S	23	
22	S	22	Pair
24	S	24	
25	S	25	Pair
27	S	27	
26	S	26	Pair
28	S	28	
29	S	29	Pair
31	S	31	
30	S	30	Pair
32	S	32	
33	S	33	Pair
35	S	35	
34	S	34	Pair
36	S	36	
37	S	37	Pair
39	S	39	
38	S	38	Pair
40	S	40	

F

<p>PROPRIETARY NOTE THIS DOCUMENT CONTAINS INFORMATION CONFIDENTIAL AND PROPRIETARY TO SAMTEC, INC. AND SHALL NOT BE REPRODUCED OR TRANSFERRED TO OTHER DOCUMENTS OR DISCLOSED TO OTHERS OR USED FOR ANY PURPOSE OTHER THAN THAT WHICH IT WAS OBTAINED WITHOUT THE EXPRESSED WRITTEN CONSENT OF SAMTEC, INC.</p> <p>DO NOT SCALE DRAWING</p> <p>SHEET SCALE: 1:1</p>	 <p>1603 Watson Court Milpitas, CA 95035 Tel: (408) 635-3540 Fax: (408) 956-8278 sales@fit4flex.com</p>
	<p>DESCRIPTION: HIGH SPEED FLEX 0.5mm ASSEMBLY</p>
	<p>DWG. NO. HFHM-XXX-T-XX.XX-DP-XX</p>
	<p>BY: J. CUMMING 2/20/2004 SHEET 3 OF 3</p>