

THIS PRODUCT MANUFACTURED WITH LEAD-FREE PROCESSING

HFHM2-XXX-T-XX.XX-DP-XXX

No OF POSITIONS
-020, -040, -060 (PER ROW)
TRANSFER END
(MALE-FEMALE)

OPTION
-MH: MOUNTING HOLES
(SEE FIG. 2, SHEET 2)
-RT1: RETENTION FEATURE
(SEE FIG. 3, SHEET3)
(LEAVE BLANK FOR
STANDARD)
-DP: DIFFERENTIAL PAIRS

LENGTH
-03.00: 3.00[76.2] INCHES
-05.00: 5.00[127.0] INCHES
-10.00: 10.00[254.0] INCHES

NOTE:

1. Ⓢ REPRESENTS A CRITICAL DIMENSION.
2. ALL DIMENSIONS TO BE SYMMETRICAL ABOUT CENTERLINE WITHIN ±.002[.05] UNLESS OTHERWISE STATED.
3. REFERENCE NA-FL-WI-1026-M FLEX PACKAGING FOR PACKAGING.
4. PARTS TO BE RoHS COMPLIANT.

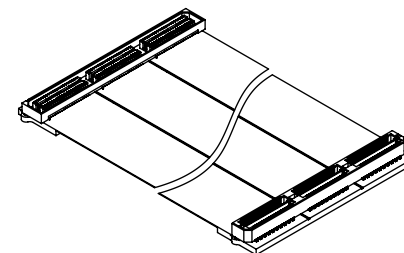
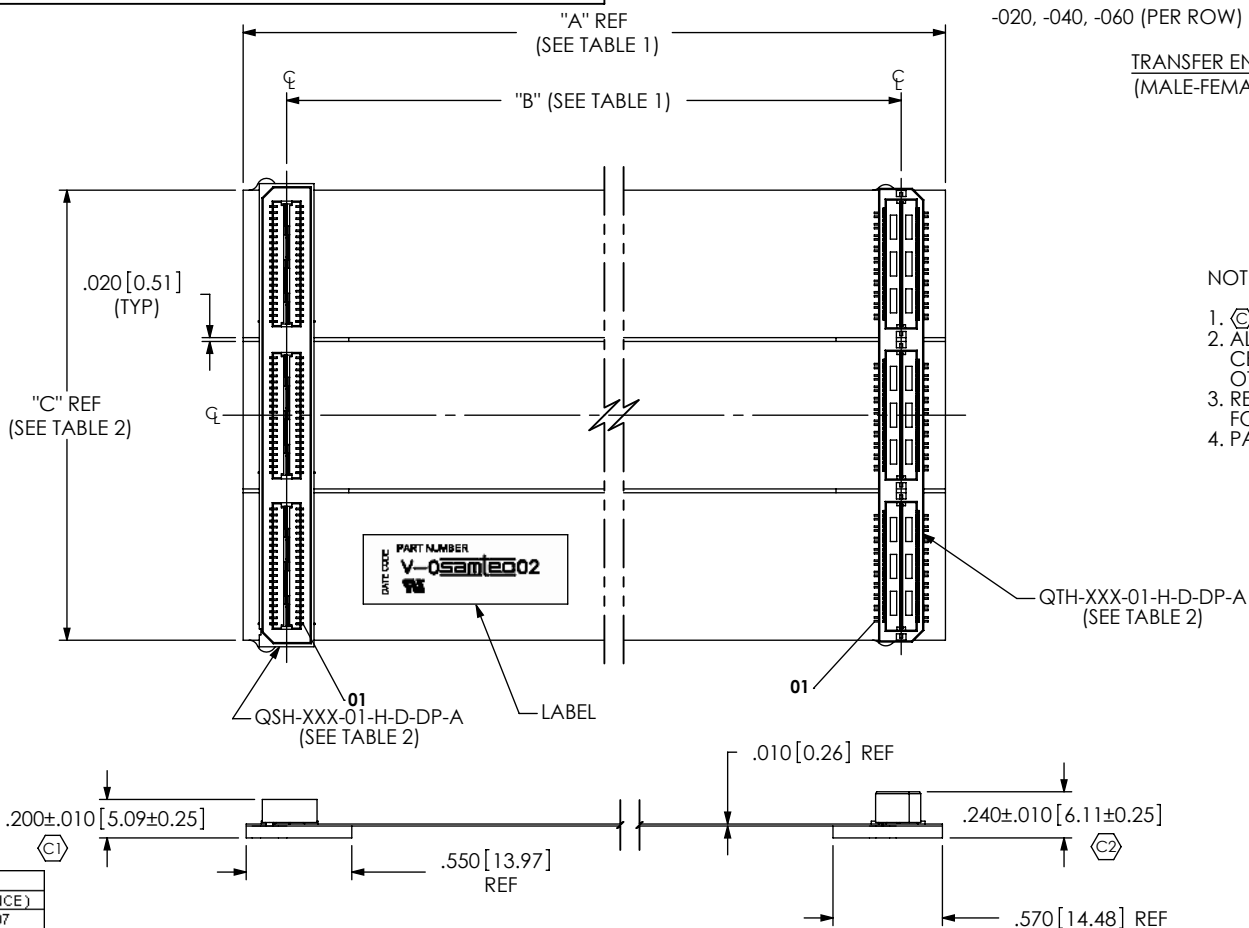


FIG. 1
HFHM2-060-T-10.00-DP SHOWN

DO NOT SCALE FROM THIS PRINT

TABLE 3
(FOR FLEX MANUFACTURING REFERENCE)

HFHM 2-020-T-03.00-DP	FE -10207
HFHM 2-020-T-03.00-DP-MH	FE -10208
HFHM 2-020-T-03.00-DP-RT1	FE -10435
HFHM 2-040-T-03.00-DP	FE -10209
HFHM 2-040-T-03.00-DP-MH	FE -10210
HFHM 2-040-T-03.00-DP-RT1	FE -10436
HFHM 2-060-T-03.00-DP	FE -10211
HFHM 2-060-T-03.00-DP-MH	FE -10212
HFHM 2-060-T-03.00-DP-RT1	FE -10437
HFHM 2-020-T-05.00-DP	FE -10213
HFHM 2-020-T-05.00-DP-MH	FE -10214
HFHM 2-020-T-05.00-DP-RT1	FE -10438
HFHM 2-040-T-05.00-DP	FE -10215
HFHM 2-040-T-05.00-DP-MH	FE -10216
HFHM 2-040-T-05.00-DP-RT1	FE -10439
HFHM 2-060-T-05.00-DP	FE -10217
HFHM 2-060-T-05.00-DP-MH	FE -10218
HFHM 2-060-T-05.00-DP-RT1	FE -10440

No. OF POS	"C"	"D"	"E"	"F"	"G"	QSH-XXX-01-H-D-DP-XXX	QTH-XXX-01-H-D-DP-XXX	FLEX
-020	.768 +/- .010 [19.50 +/- 0.25]	1.0875[27.623]	1.3375[33.973]	1.1285[28.663]	1.1285[28.663]	QSH-020-01-H-D-DP-A OR QSH-020-01-H-D-DP-A-RT1 (FOR -RT1 OPTION)	QTH-020-01-H-D-DP-A OR QTH-020-01-H-D-DP-A-RT1 (FOR -RT1 OPTION)	3", FE-10204 (QTY:1) 5", FE-10205 (QTY:1) 10", FE-10206 (QTY:1)
	1.556 +/- .010 [39.52 +/- 0.25]	1.8755[47.638]	2.1255[53.988]	1.916[40.872]	1.916[40.872]	QSH-040-01-H-D-DP-A OR QSH-040-01-H-D-DP-A-RT1 (FOR -RT1 OPTION)	QTH-040-01-H-D-DP-AOR QTH-040-01-H-D-DP-A-RT1 (FOR -RT1 OPTION)	3", FE-10204 (QTY:2) 5", FE-10205 (QTY:2) 10", FE-10206 (QTY:2)
-060	2.344 +/- .010 [59.54 +/- 0.25]	2.6635[67.653]	2.9135[74.003]	2.7035[74.003]	2.7035[74.003]	QSH-060-01-H-D-DP-A OR QSH-060-01-H-D-DP-A-RT1 (FOR -RT1 OPTION)	QTH-060-01-H-D-DP-AOR QTH-060-01-H-D-DP-A-RT1 (FOR -RT1 OPTION)	3", FE-10204 (QTY:3) 5", FE-10205 (QTY:3) 10", FE-10206 (QTY:3)

LENGTH	"A"	"B"
-3.00	3.00[76.2]	2.54[64.5]
-5.00	5.00[127.0]	4.54[115.3]
-10.00	10.00[254.0]	9.54[242.3]

UNLESS OTHERWISE SPECIFIED,
DIMENSIONS ARE IN INCHES.
TOLERANCES ARE:
DECIMALS ANGLES
.XX: ±.01 [.3]
.XXX: ±.005 [.13]
.XXXX: ±.0020 [.051]

PROPRIETARY NOTE
THIS DOCUMENT CONTAINS INFORMATION
CONFIDENTIAL AND PROPRIETARY TO
SAMTEC, INC. AND SHALL NOT BE REPRODUCED
OR TRANSFERRED TO OTHER DOCUMENTS OR
DISCLOSED TO OTHERS OR USED FOR ANY
PURPOSE OTHER THAN THAT WHICH IT WAS
OBTAINED WITHOUT THE EXPRESSED WRITTEN
CONSENT OF SAMTEC, INC.

CONNECTOR MATERIALS:
INSULATORS: LCP
CONTACTS, TERMINALS, & GROUND PLANES:
PHOS BRONZE
FLEX MATERIALS:
SEE CROSS SECTION DETAIL

DO NOT SCALE DRAWING SHEET SCALE: 1:1



520 PARK EAST BLVD, NEW ALBANY, IN 47150
PHONE: 812-944-6733 FAX: 812-948-5047
e-Mail: info@SAMTEC.com code 55322

DESCRIPTION:
HIGH SPEED FLEX 0.5mm ASSEMBLY
DWG. NO.
HFHM2-XXX-T-XX.XX-DP-XXX
BY: CLAY W 6/24/2004 SHEET 1 OF 3

REVISION M

HFHM2-DP			
-20 Shown. -40 and -60 repeat same pattern.			
J1 Pin	Signal	J2 Pin	DP Pair
1	S	1	Pair
3	S	3	
5	G	5	Pin Omitted
2	S	2	
4	S	4	Pair
6	G	6	Pin Omitted
7	S	7	
9	S	9	Pair
11	G	11	Pin Omitted
8	S	8	
10	S	10	Pair
12	G	12	Pin Omitted
13	S	13	
15	S	15	Pair
17	G	17	Pin Omitted
14	S	14	
16	S	16	Pair
18	G	18	Pin Omitted
19	S	19	
21	S	21	Pair
23	G	23	Pin Omitted
20	S	20	
22	S	22	Pair
24	G	24	Pin Omitted
25	S	25	
27	S	27	Pair
29	G	29	Pin Omitted
26	S	26	
28	S	28	Pair
30	G	30	Pin Omitted
31	S	31	
33	S	33	Pair
35	G	35	Pin Omitted
32	S	32	
34	S	34	Pair
36	G	36	Pin Omitted
37	S	37	
39	S	39	Pair
41	G	41	Pin Omitted
38	S	38	
40	S	40	Pair
42	G	42	Pin Omitted
43	S	43	
45	S	45	Pair
47	G	47	Pin Omitted
44	S	44	
46	S	46	Pair
48	G	48	Pin Omitted
49	S	49	
51	S	51	Pair
53	G	53	Pin Omitted
50	S	50	
52	S	52	Pair
54	G	54	Pin Omitted
55	S	55	
57	S	57	Pair
59	G	59	Pin Omitted
56	S	56	
58	S	58	Pair
60	G	60	Pin Omitted

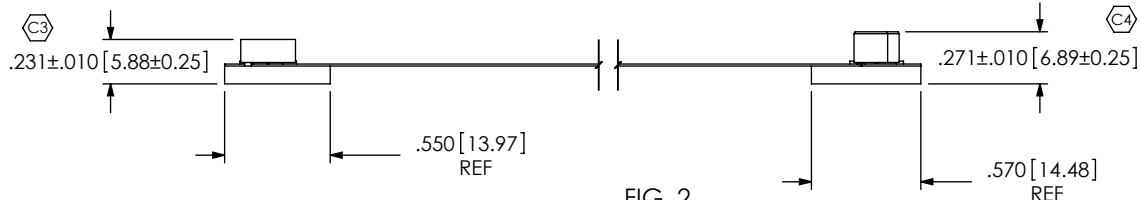
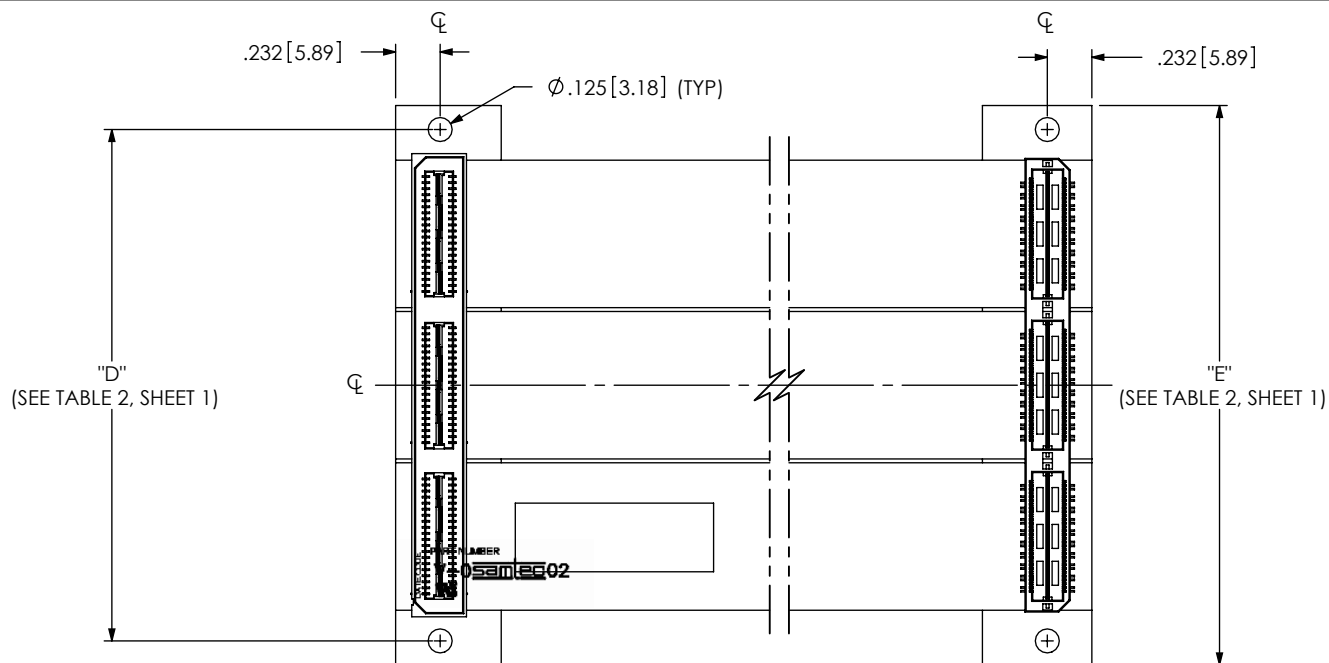


FIG. 2
-MH OPTION
(SAME AS FIG. 1, UNLESS OTHERWISE STATED)
HFHM2-060-T-10.00-DP-MH SHOWN

COVERFILM		.002[0.05] POLYIMIDE .001[0.03] ADHESIVE
COPPER CLAD		1/2 oz COPPER .001[0.03] ADHESIVE .001[0.03] POLYIMIDE .001[0.03] ADHESIVE 1/2 oz COPPER
COVERFILM		.001[0.03] ADHESIVE .002[0.05] POLYIMIDE
ADHESIVE		.001[0.03] ADHESIVE
STIFFENER		STANDARD: .062[1.57] FR4 -MH OPTION: .093[2.36] FR4 -RT1 OPTION: .093[2.36] FR4


CROSS SECTION OF FLEX & STIFFENER
NOT TO SCALE

F:\DWG\MISC\MKTG\HFHM2-XXX-T-XX.XX-DP-XXX-MKT.SLDDRW

PROPRIETARY NOTE
THIS DOCUMENT CONTAINS INFORMATION CONFIDENTIAL AND PROPRIETARY TO SAMTEC, INC. AND SHALL NOT BE REPRODUCED OR TRANSFERRED TO OTHER DOCUMENTS OR DISCLOSED TO OTHERS OR USED FOR ANY PURPOSE OTHER THAN THAT WHICH IT WAS OBTAINED WITHOUT THE EXPRESSED WRITTEN CONSENT OF SAMTEC, INC.

DO NOT SCALE DRAWING

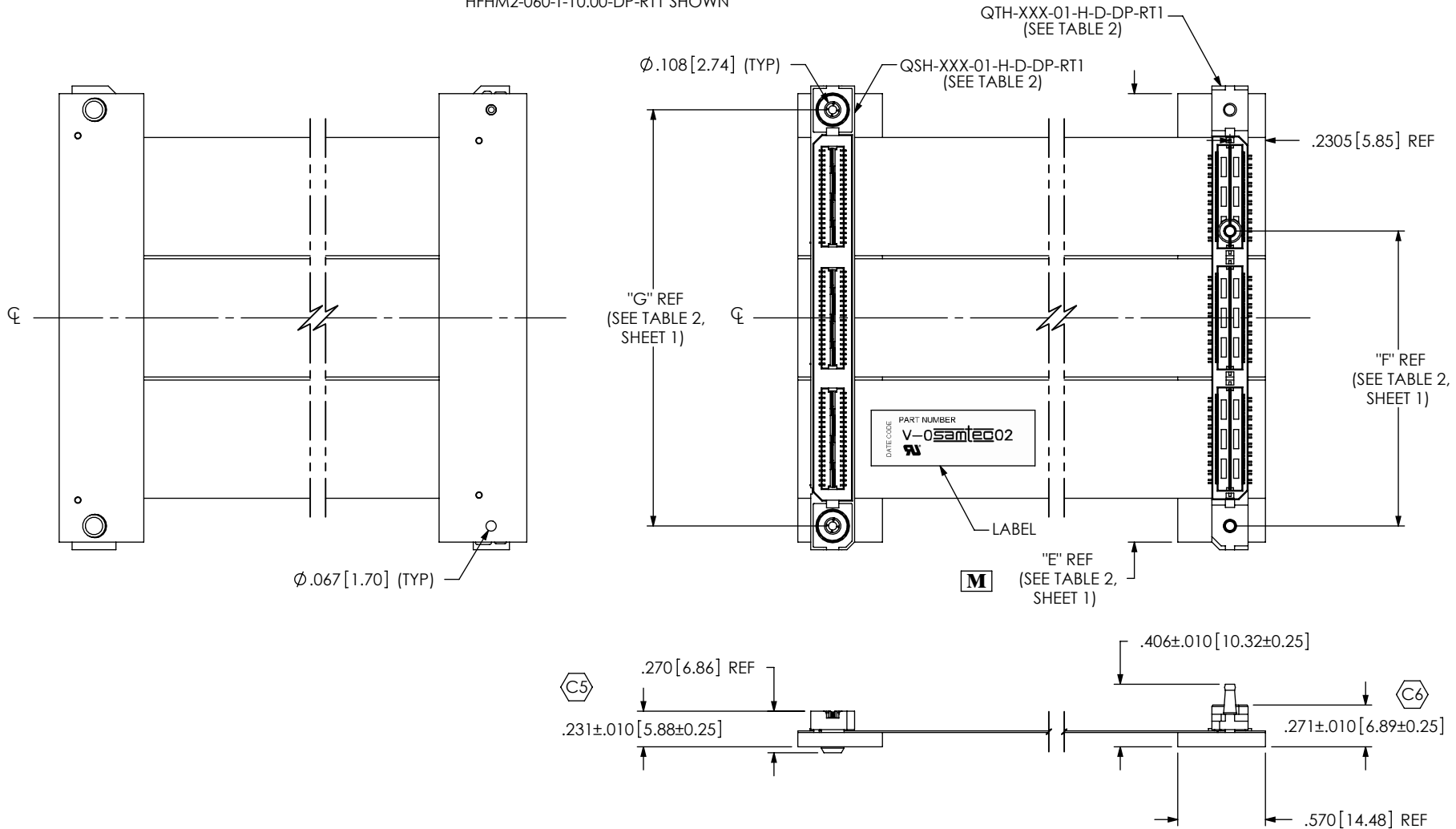
SHEET SCALE: 1:1



520 PARK EAST BLVD, NEW ALBANY, IN 47150
PHONE: 812-944-6733 FAX: 812-948-5047
e-Mail: info@SAMTEC.com code 55322

DESCRIPTION: HIGH SPEED FLEX 0.5mm ASSEMBLY	
DWG. NO. HFHM2-XXX-T-XX.XX-DP-XXX	
BY: CLAY W 6/24/2004	SHEET 2 OF 3

FIG. 3
 -RT1 OPTION
 (SAME AS FIG 1, UNLESS OTHERWISE STATED)
 HFHM2-060-T-10.00-DP-RT1 SHOWN



PROPRIETARY NOTE
 THIS DOCUMENT CONTAINS INFORMATION CONFIDENTIAL AND PROPRIETARY TO SAMTEC, INC. AND SHALL NOT BE REPRODUCED OR TRANSFERRED TO OTHER DOCUMENTS OR DISCLOSED TO OTHERS OR USED FOR ANY PURPOSE OTHER THAN THAT WHICH IT WAS OBTAINED WITHOUT THE EXPRESSED WRITTEN CONSENT OF SAMTEC, INC.

DO NOT SCALE DRAWING

SHEET SCALE: 1:1

samtec

520 PARK EAST BLVD, NEW ALBANY, IN 47150
 PHONE: 812-944-6733 FAX: 812-948-5047
 e-Mail: info@SAMTEC.com code 55322

DESCRIPTION:
 HIGH SPEED FLEX 0.5mm ASSEMBLY

DWG. NO.
HFHM2-XXX-T-XX.XX-DP-XXX

BY: CLAY W 6/24/2004 SHEET 3 OF 3