

TABLE 2							
No. OF POS	"C"	"D"	"E"	"F"	QSH-XXX-01-H-D-A	QTH-XXX-01-H-D-A	FLEX
-030	.768 ± .010 [19.50 ± 0.25]	1.0875[27.623]	1.3375[33.973]	1.1285[28.664]	QSH-030-01-H-D-A OR QSH-030-01-H-D-A-RT1 (FOR -RT1 OPTION)	QTH-030-01-H-D-A OR QTH-030-01-H-D-A-RT1 (FOR -RT1 OPTION)	3", FE-10270 (QTY:1) 5", FE-10271 (QTY:1) 10", FE-10272 (QTY:1)
-060	1.556 ± .010 [39.52 ± 0.25]	1.8755[47.638]	2.1255[53.988]	1.9160[48.666]	QSH-060-01-H-D-A OR QSH-060-01-H-D-A-RT1 (FOR -RT1 OPTION)	QTH-060-01-H-D-A OR QTH-060-01-H-D-A-RT1 (FOR -RT1 OPTION)	3", FE-10270 (QTY:2) 5", FE-10271 (QTY:2) 10", FE-10272 (QTY:2)
-090	2.344 ± .010 [59.54 ± 0.25]	2.6635[67.653]	2.9135[74.003]	2.7035[68.669]	QSH-090-01-H-D-A OR QSH-090-01-H-D-A-RT1 (FOR -RT1 OPTION)	QTH-090-01-H-D-A OR QTH-090-01-H-D-A-RT1 (FOR -RT1 OPTION)	3", FE-10270 (QTY:3) 5", FE-10271 (QTY:3) 10", FE-10272 (QTY:3)

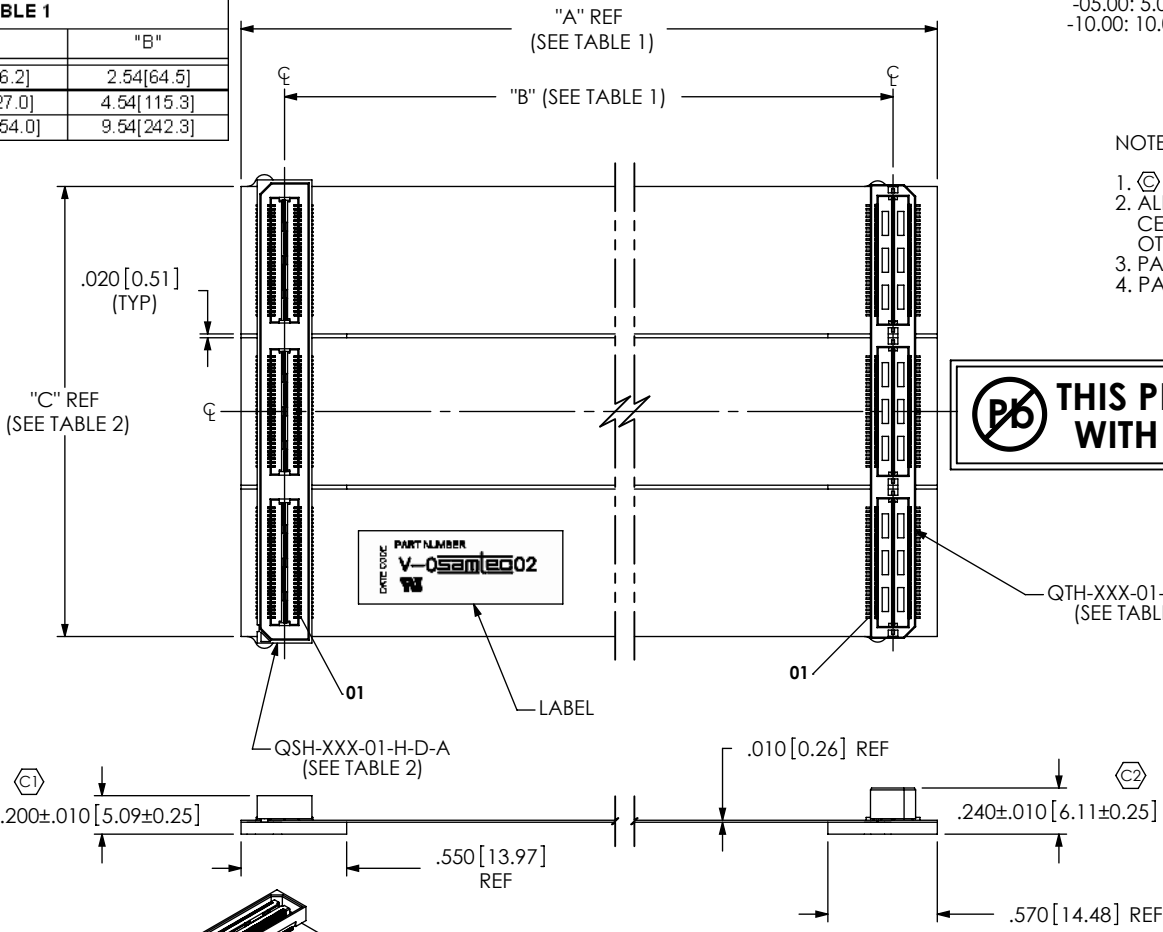
No OF POSITIONS
-030, -060, -090 (PER ROW)

TRANSFER END
(MALE-FEMALE)

LENGTH
-03.00: 3.00[76.2] INCHES
-05.00: 5.00[127.0] INCHES
-10.00: 10.00[254.0] INCHES

OPTION
-MH: MOUNTING HOLES
(SEE FIG. 2, SHEET 2)
(LEAVE BLANK FOR STANDARD)
-RT1: RETENTION FEATURE
(SEE FIG. 3, SHEET 3)
(LEAVE BLANK FOR STANDARD)
-SE: SINGLE ENDED

TABLE 1		
LENGTH	"A"	"B"
-3.00	3.00[76.2]	2.54[64.5]
-5.00	5.00[127.0]	4.54[115.3]
-10.00	10.00[254.0]	9.54[242.3]



NOTE:

1. Ⓢ REPRESENTS A CRITICAL DIMENSION.
2. ALL DIMENSIONS TO BE SYMMETRICAL ABOUT CENTERLINE WITHIN ±.002[.05] UNLESS OTHERWISE STATED.
3. PARTS TO BE LAYER PACKAGED IN FOAM.
4. PARTS TO BE ROHS COMPLIANT

PROHIBITED THIS PRODUCT MANUFACTURED WITH LEAD-FREE PROCESSING

FIG. 1
HFHM2-090-T-10.00-SE SHOWN

TABLE 3 (FOR FLEX MANUFACTURING REFERENCE)	
PART NUMBER	FE NUMBER
HFHM2-030-T-03.00-SE	10273
HFHM2-030-T-03.00-SE-MH	10274
HFHM2-030-T-03.00-SE-RT1	10426
HFHM2-060-T-03.00-SE	10275
HFHM2-060-T-03.00-SE-MH	10276
HFHM2-060-T-03.00-SE-RT1	10427
HFHM2-090-T-03.00-SE	10277
HFHM2-090-T-03.00-SE-MH	10278
HFHM2-090-T-03.00-SE-RT1	10428
HFHM2-030-T-05.00-SE	10279
HFHM2-030-T-05.00-SE-MH	10280
HFHM2-030-T-05.00-SE-RT1	10429
HFHM2-060-T-05.00-SE	10281
HFHM2-060-T-05.00-SE-MH	10282
HFHM2-060-T-05.00-SE-RT1	10430
HFHM2-090-T-05.00-SE	10283
HFHM2-090-T-05.00-SE-MH	10284
HFHM2-090-T-05.00-SE-RT1	10431
HFHM2-030-T-10.00-SE	10285
HFHM2-030-T-10.00-SE-MH	10286
HFHM2-030-T-10.00-SE-RT1	10432
HFHM2-060-T-10.00-SE	10287
HFHM2-060-T-10.00-SE-MH	10288
HFHM2-060-T-10.00-SE-RT1	10433
HFHM2-090-T-10.00-SE	10289
HFHM2-090-T-10.00-SE-MH	10290
HFHM2-090-T-10.00-SE-RT1	10434

F:\DWG\MISC\Mktg\HFHM2-XXX-T-XX.XX-SE-XXX-MKT.SLDRW

UNLESS OTHERWISE SPECIFIED, DIMENSIONS ARE IN INCHES.
TOLERANCES ARE:
DECIMALS ANGLES
.XX: ±.01 [.3] 2°
.XXX: ±.005 [.13]
.XXXX: ±.0020 [.051]

PROPRIETARY NOTE
THIS DOCUMENT CONTAINS INFORMATION CONFIDENTIAL AND PROPRIETARY TO SAMTEC, INC. AND SHALL NOT BE REPRODUCED OR TRANSFERRED TO OTHER DOCUMENTS OR DISCLOSED TO OTHERS OR USED FOR ANY PURPOSE OTHER THAN THAT WHICH IT WAS OBTAINED WITHOUT THE EXPRESSED WRITTEN CONSENT OF SAMTEC, INC.

CONNECTOR MATERIALS:
INSULATORS: LCP
CONTACTS, TERMINALS, & GROUND PLANES: PHOS BRONZE
FLEX MATERIALS:
SEE CROSS SECTION DETAIL

DO NOT SCALE DRAWING SHEET SCALE: 1:1



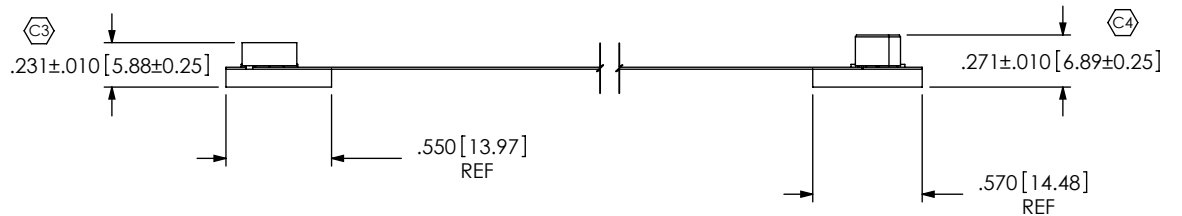
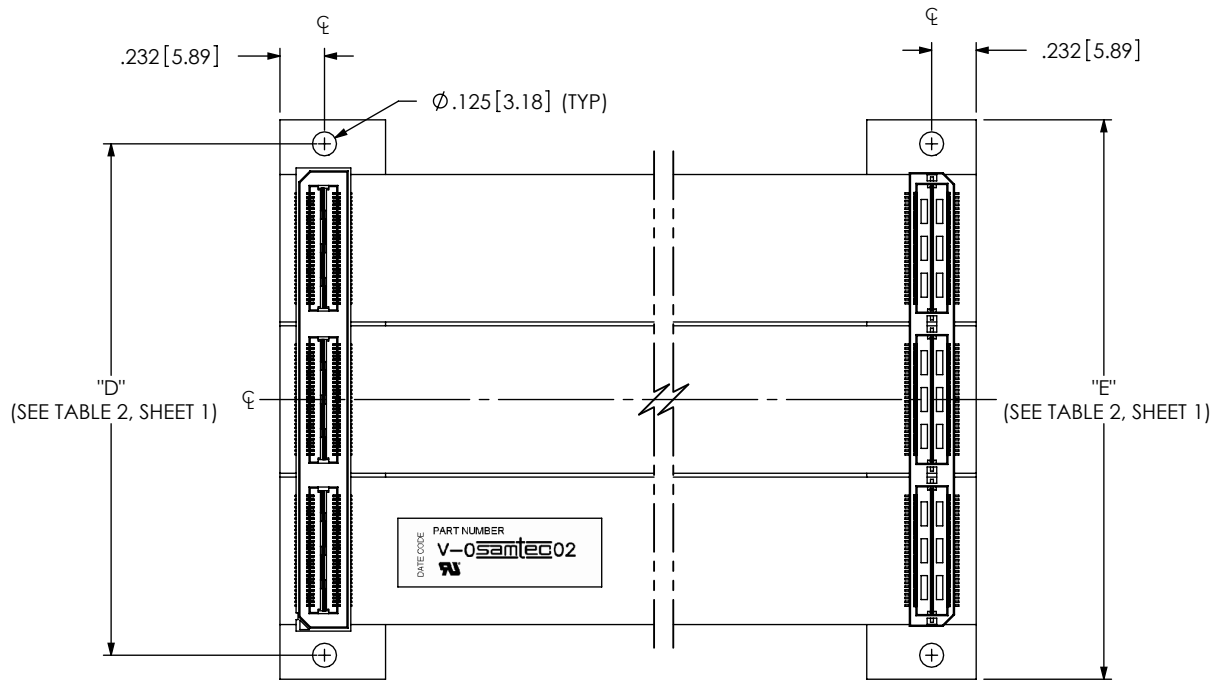
520 PARK EAST BLVD, NEW ALBANY, IN 47150
PHONE: 812-944-6733 FAX: 812-948-5047
e-Mail: info@SAMTEC.com code: 55322

DESCRIPTION:
HIGH SPEED FLEX 0.5mm ASSEMBLY

DWG. NO.
HFHM2-XXX-T-XX.XX-SE-XXX

BY: J.CUMMINGS 3/10/2005 SHEET 1 OF 4

FIG. 2
 -MH OPTION
 (SAME AS FIG. 1, UNLESS OTHERWISE STATED)
 HFHM2-090-T-10.00-SE-MH SHOWN



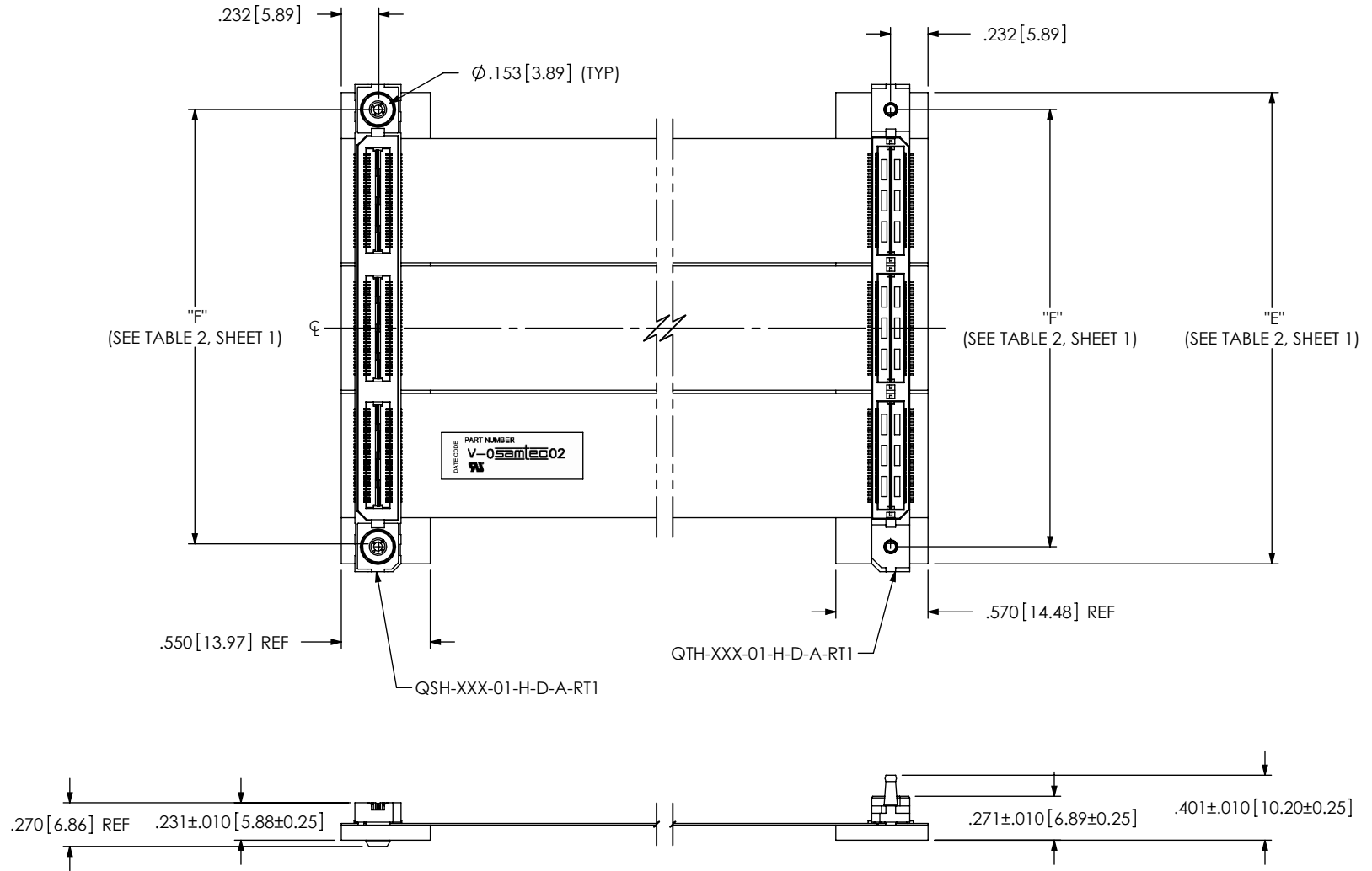
COVERFILM		.002[0.05] POLYIMIDE .001[0.03] ADHESIVE
COPPER CLAD		1/2 oz COPPER .001[0.03] ADHESIVE .001[0.03] POLYIMIDE .001[0.03] ADHESIVE 1/2 oz COPPER
COVERFILM		.001[0.03] ADHESIVE .002[0.05] POLYIMIDE
ADHESIVE		.001[0.03] ADHESIVE
STIFFENER		STANDARD: .062[1.57] FR4 -MH OPTION: .093[2.36] FR4


CROSS SECTION OF FLEX & STIFFENER
NOT TO SCALE

<p>PROPRIETARY NOTE THIS DOCUMENT CONTAINS INFORMATION CONFIDENTIAL AND PROPRIETARY TO SAMTEC, INC. AND SHALL NOT BE REPRODUCED OR TRANSFERRED TO OTHER DOCUMENTS OR DISCLOSED TO OTHERS OR USED FOR ANY PURPOSE OTHER THAN THAT WHICH IT WAS OBTAINED WITHOUT THE EXPRESSED WRITTEN CONSENT OF SAMTEC, INC.</p> <p>DO NOT SCALE DRAWING</p> <p>SHEET SCALE: 1:1</p>	
	<p>520 PARK EAST BLVD, NEW ALBANY, IN 47150 PHONE: 812-944-6733 FAX: 812-948-5047 e-Mail: info@SAMTEC.com code: 55322</p>
	<p>DESCRIPTION: HIGH SPEED FLEX 0.5mm ASSEMBLY</p>
	<p>DWG. NO. HFHM2-XXX-T-XX.XX-SE-XXX</p>
<p>BY: J.CUMMINGS 3/10/2005 SHEET 2 OF 4</p>	

FIG. 3

-RT1 OPTION
 (SAME AS FIG. 1, UNLESS OTHERWISE STATED)
 HFHM2-090-T-10.00-SE-RT1 SHOWN



<p>PROPRIETARY NOTE</p> <p>THIS DOCUMENT CONTAINS INFORMATION CONFIDENTIAL AND PROPRIETARY TO SAMTEC, INC. AND SHALL NOT BE REPRODUCED OR TRANSFERRED TO OTHER DOCUMENTS OR DISCLOSED TO OTHERS OR USED FOR ANY PURPOSE OTHER THAN THAT WHICH IT WAS OBTAINED WITHOUT THE EXPRESSED WRITTEN CONSENT OF SAMTEC, INC.</p> <p>DO NOT SCALE DRAWING</p> <p>SHEET SCALE: 1:1</p>		
	<p>520 PARK EAST BLVD, NEW ALBANY, IN 47150 PHONE: 812-944-6733 FAX: 812-948-5047 e-Mail: info@SAMTEC.com code: 55322</p>	
	<p>DESCRIPTION: HIGH SPEED FLEX 0.5mm ASSEMBLY</p>	
	<p>DWG. NO. HFHM2-XXX-T-XX.XX-SE-XXX</p>	
<p>BY: J.CUMMINGS 3/10/2005</p>		<p>SHEET 3 OF 4</p>

HFHM2-SE

-30 Shown. -60 and -90 repeat same pattern.

J1 Pin	Signal	J2 Pin	Net
1	S	1	1
2	S	2	2
3	G	3	GND
4	G	4	GND
5	S	5	3
6	S	6	4
7	G	7	GND
8	G	8	GND
9	S	9	5
10	S	10	6
11	G	11	GND
12	G	12	GND
13	S	13	7
14	S	14	8
15	G	15	GND
16	G	16	GND
17	S	17	9
18	S	18	10
19	G	19	GND
20	G	20	GND
21	S	21	11
22	S	22	12
23	G	23	GND
24	G	24	GND
25	S	25	13
26	S	26	14
27	G	27	GND
28	G	28	GND
29	S	29	15
30	S	30	16

J

HFHM2-SE (CONT)

J1 Pin	Signal	J2 Pin	Net
31	G	31	GND
32	G	32	GND
33	S	33	17
34	S	34	18
35	G	35	GND
36	G	36	GND
37	S	37	19
38	S	38	20
39	G	39	GND
40	G	40	GND
41	S	41	21
42	S	42	22
43	G	43	GND
44	G	44	GND
45	S	45	23
46	S	46	24
47	G	47	GND
48	G	48	GND
49	S	49	25
50	S	50	26
51	G	51	GND
52	G	52	GND
53	S	53	27
54	S	54	28
55	G	55	GND
56	G	56	GND
57	S	57	29
58	S	58	30
59	G	59	GND
60	G	60	GND

PROPRIETARY NOTE

THIS DOCUMENT CONTAINS INFORMATION CONFIDENTIAL AND PROPRIETARY TO SAMTEC, INC. AND SHALL NOT BE REPRODUCED OR TRANSFERRED TO OTHER DOCUMENTS OR DISCLOSED TO OTHERS OR USED FOR ANY PURPOSE OTHER THAN THAT WHICH IT WAS OBTAINED WITHOUT THE EXPRESSED WRITTEN CONSENT OF SAMTEC, INC.

DO NOT SCALE DRAWING

SHEET SCALE: 1:1



520 PARK EAST BLVD, NEW ALBANY, IN 47150
 PHONE: 812-944-6733 FAX: 812-948-5047
 e-Mail: info@SAMTEC.com code: 55322

DESCRIPTION: HIGH SPEED FLEX 0.5mm ASSEMBLY

DWG. NO. HFHM2-XXX-T-XX.XX-SE-XXX

BY: J.CUMMINGS 3/10/2005 SHEET 4 OF 4