

DO NOT SCALE FROM THIS PRINT

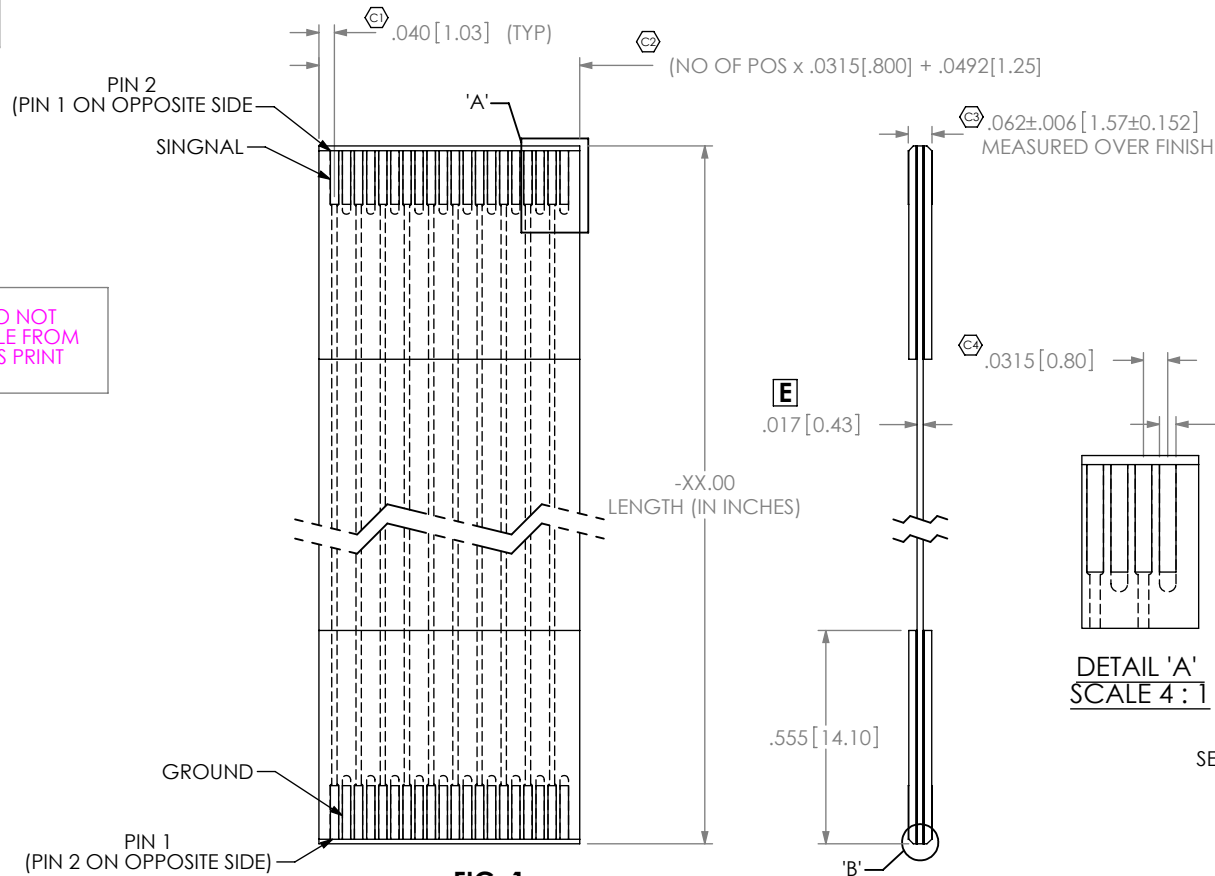


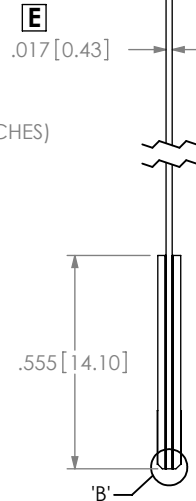
FIG. 1
HSF8-020-XX.00-SE SHOWN

HSF8-OXX-XX.00-XX

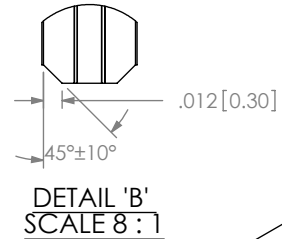
No OF POSITIONS
-020, -030 (SEE FIG. 1) *
-050 (SEE FIG. 2)
LENGTH (IN INCHES)
-05.00
-10.00
-15.00 *

SIGNAL
-SE: SINGLE ENDED
-DP: DIFFERENTIAL PAIR
(SEE FIG 2)

* NOT RELEASED

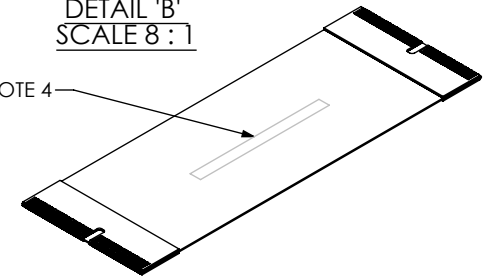


DETAIL 'A'
SCALE 4:1



DETAIL 'B'
SCALE 8:1

SEE NOTE 4



TOP SOLDERMASK	.002[.05] SOLDERMASK
RIGID LAYER 1	.020[.05] FR4
RIGID LAYER 1 ADHESIVE	.002[.05] ADHESIVE
TOP COVERFILM	.002[.05] POLYIMIDE .001[0.03] ADHESIVE
LAYER 2 COPPER CLAD	1/2 OZ COPPER .002[.05] KAPTON
ADHESIVE	.001[0.03] ADHESIVE
LAYER 3/4 COPPER CLAD	1/2 OZ COPPER .003[.076] KAPTON 1/2 OZ COPPER
BOTTOM COVERFILM	.001[0.03] ADHESIVE .002[0.05] POLYIMIDE
RIGID LAYER 5 ADHESIVE	.002[.05] ADHESIVE
RIGID LAYER 5	.020[.05] FR4
BOTTOM SOLDERMASK	.002[.05] SOLDERMASK

CROSS SECTION OF FLEX & STIFFENER
NOT TO SCALE FOR REFERENCE ONLY

Flex Manufacturing Reference	
FE-10375	HSF8-020-05.00-DP
FE-10376	HSF8-030-05.00-DP *
FE-10330	HSF8-050-05.00-DP
FE-10377	HSF8-020-10.00-DP
FE-10378	HSF8-030-10.00-DP *
FE-10379	HSF8-050-10.00-DP
FE-10380	HSF8-020-15.00-DP *
FE-10381	HSF8-030-15.00-DP *
FE-10382	HSF8-050-15.00-DP *
FE-10399	HSF8-020-05.00-SE
FE-10400	HSF8-030-05.00-SE *
FE-10401	HSF8-050-05.00-SE
FE-10402	HSF8-020-10.00-SE
FE-10403	HSF8-030-10.00-SE *
FE-10404	HSF8-050-10.00-SE
FE-10405	HSF8-020-15.00-SE *
FE-10406	HSF8-030-15.00-SE *
FE-10407	HSF8-050-15.00-SE *

NOTES:

- ⊕ REPRESENTS A CRITICAL DIMENSION.
- ALL DIMENSIONS TO BE SYMMETRICAL ABOUT CENTERLINE WITHIN ±.002[0.05] UNLESS OTHERWISE STATED.
- PARTS TO BE LAYER PACKAGED.
- SAMTEC LOGO, PART #, PANEL ID #, AND DATE CODE TO BE ETCHED OR MARKED PERMANENTLY INTO FLEX.
- ⊕ IMPEDANCE TO BE 100 OHMS +/- 10% FOR -DP SIGNALS AND 50 OHMS +/- 10% FOR -SE SIGNALS. VENDOR MAY ADJUST TRACE WIDTHS FROM PROVIDED GERBER TO MEET IMPEDANCE, VENDOR TO PROVIDE IMPEDANCE VERIFICATION REPORT.
- SURFACE FINISH OF PADS TO BE .000030 HARD GOLD OVER .000100 NICKEL MIN.
- PARTS TO BE ELECTRICALLY TESTED FOR OPENS AND SHORTS
- FABRICATION OF THIS PARTS SHALL BE IN CONFORMANCE WITH IPC 6013 CLASS 2
- ⊕ HOLE PLATING TO BE 0.00098 MINIMUM. HOLE DIAMETER SPECIFIED AFTER PLATING
- NOTE DELETED.
- CROSS SECTION DATA TO BE SUPPLIED BY VENDOR FOR PLATING AND TRACE REQUIREMENTS.

UNLESS OTHERWISE SPECIFIED, DIMENSIONS ARE IN INCHES.
TOLERANCES ARE:
DECIMALS ANGLES
.XX: ±.01 [.3] 2°
.XXX: ±.005 [.13]
.XXXX: ±.0020 [.051]

PROPRIETARY NOTE
THIS DOCUMENT CONTAINS INFORMATION CONFIDENTIAL AND PROPRIETARY TO SAMTEC, INC. AND SHALL NOT BE REPRODUCED OR TRANSFERRED TO OTHER DOCUMENTS OR DISCLOSED TO OTHERS OR USED FOR ANY PURPOSE OTHER THAN THAT WHICH IT WAS OBTAINED WITHOUT THE EXPRESSED WRITTEN CONSENT OF SAMTEC, INC.

samtec
520 PARK EAST BLVD, NEW ALBANY, IN 47150
PHONE: 812-944-6733 FAX: 812-948-5047
e-Mail: info@SAMTEC.com code: 55322

MATERIAL:
SEE CROSS SECTION DETAIL

DO NOT SCALE DRAWING SHEET SCALE: 2:1

DESCRIPTION:
FLEX CARD

DWG. NO.
HSF8-OXX-XX.00-XX

BY: T. SPINE 11/2/2005 SHEET 1 OF 4

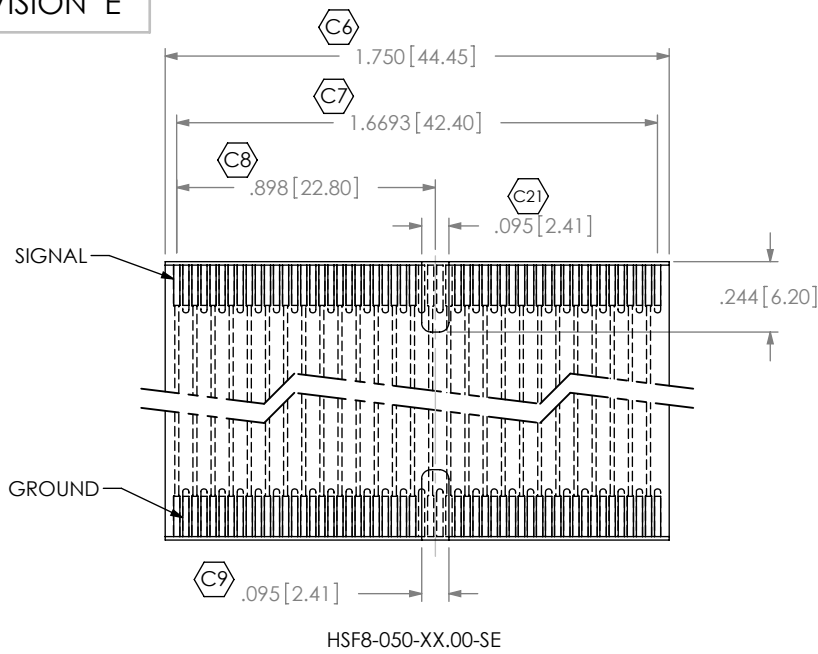


FIG.2
SAME AS FIGURE T EXCEPT AS SHOWN

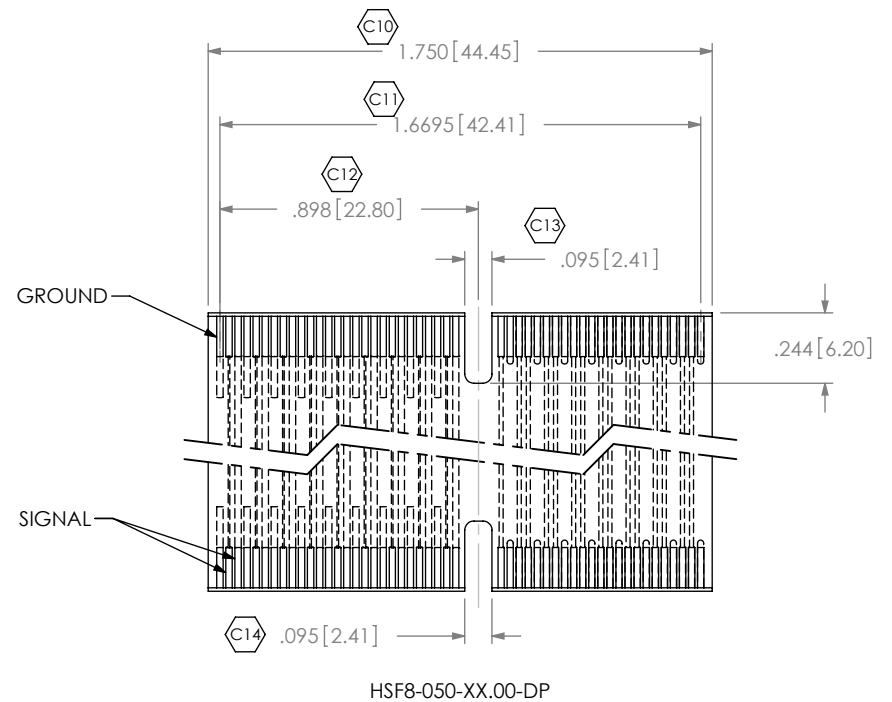


FIG.3
SAME AS FIGURE T EXCEPT AS SHOWN

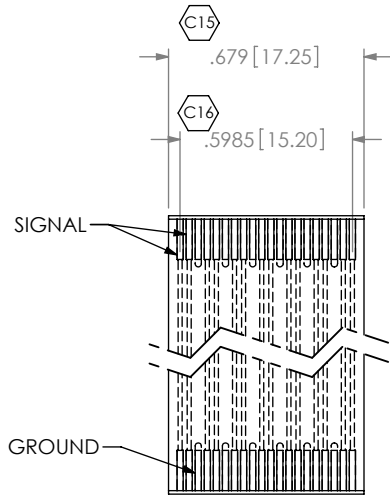


FIG.4
SAME AS FIGURE T EXCEPT AS SHOWN

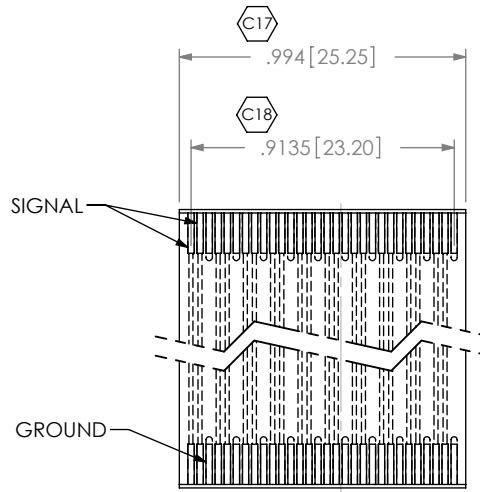


FIG.5
SAME AS FIGURE T EXCEPT AS SHOWN
* NOT RELEASED

PROPRIETARY NOTE
THIS DOCUMENT CONTAINS INFORMATION CONFIDENTIAL AND PROPRIETARY TO SAMTEC, INC. AND SHALL NOT BE REPRODUCED OR TRANSFERRED TO OTHER DOCUMENTS OR DISCLOSED TO OTHERS OR USED FOR ANY PURPOSE OTHER THAN THAT WHICH IT WAS OBTAINED WITHOUT THE EXPRESSED WRITTEN CONSENT OF SAMTEC, INC.

DO NOT SCALE DRAWING

SHEET SCALE: 2:1

samtec

520 PARK EAST BLVD., NEW ALBANY, IN 47150
PHONE: 812-944-6733 FAX: 812-948-5047
e-Mail: info@SAMTEC.com code: 55322

DESCRIPTION: FLEX CARD

DWG. NO. HSF8-OXX-XX.00-XX

BY: T. SPINE 11/2/2005 SHEET 2 OF 4

SIGNAL MAPPING -DP

HSF8-020-XX.XX-DP

J1 Pin	Signal	J2 Pin
1	S	2
2	S	1
3	S	4
4	S	3
5	G	6
6	G	5
7	S	8
8	S	7
9	S	10
10	S	9
11	G	12
12	G	11
13	S	14
14	S	13
15	S	16
16	S	15
17	G	18
18	G	17
19	S	20
20	S	19
21	S	22
22	S	21
23	G	24
24	G	23
25	S	26
26	S	25
27	S	28
28	S	27
29	G	30
30	G	29
31	S	32
32	S	31
33	S	34
34	S	33
35	G	36
36	G	35
37	S	38
38	S	37
39	S	40
40	S	39

*GNDs are common

HSF8-050-XX.XX-DP

J1 Pin	Signal	J2 Pin
1	G	2
2	G	1
3	S	4
4	S	3
5	S	6
6	S	5
7	G	8
8	G	7
9	S	10
10	S	9
11	S	12
12	S	11
13	G	14
14	G	13
15	S	16
16	S	15
17	S	18
18	S	17
19	G	20
20	G	19
21	S	22
22	S	21
23	S	24
24	S	23
25	G	26
26	G	25
27	S	28
28	S	27
29	S	30
30	S	29
31	G	32
32	G	31
33	S	34
34	S	33

HSF8-050-XX.XX-DP (CONT)

J1 Pin	Signal	J2 Pin
35	S	36
36	S	35
37	G	38
38	G	37
39	S	40
40	S	39
41	S	42
42	S	41
43	G	44
44	G	43
45	S	46
46	S	45
47	S	48
48	S	47
49	G	50
50	G	49
51	S	52
52	S	51
53	S	54
54	S	53
55	S	56
56	S	55
57	G	58
58	G	57
59	S	60
60	S	59
61	S	62
62	S	61
63	G	64
64	G	63
65	S	66
66	S	65
67	S	68
68	S	67

HSF8-050-XX.XX-DP (CONT)

J1 Pin	Signal	J2 Pin
69	G	70
70	G	69
71	S	72
72	S	71
73	S	74
74	S	73
75	G	76
76	G	75
77	S	78
78	S	77
79	S	80
80	S	79
81	G	82
82	G	81
83	S	84
84	S	83
85	S	86
86	S	85
87	G	88
88	G	87
89	S	90
90	S	89
91	S	92
92	S	91
93	G	94
94	G	93
95	S	96
96	S	95
97	S	98
98	S	97
99	G	100
100	G	99

*GNDs are common

PROPRIETARY NOTE

THIS DOCUMENT CONTAINS INFORMATION CONFIDENTIAL AND PROPRIETARY TO SAMTEC, INC. AND SHALL NOT BE REPRODUCED OR TRANSFERRED TO OTHER DOCUMENTS OR DISCLOSED TO OTHERS OR USED FOR ANY PURPOSE OTHER THAN THAT WHICH IT WAS OBTAINED WITHOUT THE EXPRESSED WRITTEN CONSENT OF SAMTEC, INC.

DO NOT SCALE DRAWING

SHEET SCALE: 2:1



520 PARK EAST BLVD, NEW ALBANY, IN 47150
 PHONE: 812-944-6733 FAX: 812-948-5047
 e-Mail: info@SAMTEC.com code: 55322

DESCRIPTION:	FLEX CARD	
DWG. NO.	HSF8-OXX-XX.00-XX	
BY: T. SPINE	11/2/2005	SHEET 3 OF 4

SIGNAL MAPPING -SE

HSF8-020-XX.XX-SE

J1 Pin	Signal	J2 Pin
1	S	2
2	S	1
3	G	4
4	G	3
5	S	6
6	S	5
7	G	8
8	G	7
9	S	10
10	S	9
11	G	12
12	G	11
13	S	14
14	S	13
15	G	16
16	G	15
17	S	18
18	S	17
19	G	20
20	G	19
21	S	22
22	S	21
23	G	24
24	G	23
25	S	26
26	S	25
27	G	28
28	G	27
29	S	30
30	S	29
31	G	32
32	G	31
33	S	34
34	S	33
35	G	36
36	G	35
37	S	38
38	S	37
39	G	40
40	G	39

*GNDs are common

HSF8-050-XX.XX-SE

J1 Pin	Signal	J2 Pin
1	S	2
2	S	1
3	G	4
4	G	3
5	S	6
6	S	5
7	G	8
8	G	7
9	S	10
10	S	9
11	G	12
12	G	11
13	S	14
14	S	13
15	G	16
16	G	15
17	S	18
18	S	17
19	G	20
20	G	19
21	S	22
22	S	21
23	G	24
24	G	23
25	S	26
26	S	25
27	G	28
28	G	27
29	S	30
30	S	29
31	G	32
32	G	31
33	S	34
34	S	33

HSF8-050-XX.XX-SE (CONT)

J1 Pin	Signal	J2 Pin
35	G	36
36	G	35
37	S	38
38	S	37
39	G	40
40	G	39
41	S	42
42	S	41
43	G	44
44	G	43
45	S	46
46	S	45
47	G	48
48	G	47
49	S	50
50	S	49
51	G	52
52	G	51
53	S	54
54	S	53
55	G	56
56	G	55
57	S	58
58	S	57
59	G	60
60	G	59
61	S	62
62	S	61
63	G	64
64	G	63
65	S	66
66	S	65
67	G	68
68	G	67

HSF8-050-XX.XX-SE (CONT)

J1 Pin	Signal	J2 Pin
69	S	70
70	S	69
71	G	72
72	G	71
73	S	74
74	S	73
75	G	76
76	G	75
77	S	78
78	S	77
79	G	80
80	G	79
81	S	82
82	S	81
83	G	84
84	G	83
85	S	86
86	S	85
87	G	88
88	G	87
89	S	90
90	S	89
91	G	92
92	G	91
93	S	94
94	S	93
95	G	96
96	G	95
97	S	98
98	S	97
99	G	100
100	G	99

*GNDs are common

PROPRIETARY NOTE

THIS DOCUMENT CONTAINS INFORMATION CONFIDENTIAL AND PROPRIETARY TO SAMTEC, INC. AND SHALL NOT BE REPRODUCED OR TRANSFERRED TO OTHER DOCUMENTS OR DISCLOSED TO OTHERS OR USED FOR ANY PURPOSE OTHER THAN THAT WHICH IT WAS OBTAINED WITHOUT THE EXPRESSED WRITTEN CONSENT OF SAMTEC, INC.

DO NOT SCALE DRAWING

SHEET SCALE: 2:1



520 PARK EAST BLVD, NEW ALBANY, IN 47150
 PHONE: 812-944-6733 FAX: 812-948-5047
 e-Mail: info@SAMTEC.com code: 55322

DESCRIPTION:

FLEX CARD

DWG. NO.

HSF8-OXX-XX.00-XX

BY: T. SPINE

11/2/2005

SHEET 4 OF 4